

GONSIOR SIMMENTALS

# IN • THE • HEARTLAND

BULLS • BREDS • OPENS



# 20

SUNDAY • MARCH • 15TH

20TH ANNUAL PRODUCTION SALE

12:30 PM • Gonsior Farms Sale Facility

28906 State Hwy. 22 • Fullerton, Nebraska





**Join us on Sunday, March 15, 2020 • Sale starts at 12:30 PM CST**  
**Gonsior Farms Sale Facility • 28906 State Hwy. 22 • Fullerton, Nebraska**

**Sale time is near!** Early winter was certainly a test with mud, snow, rain, ice and more mud. You'll probably notice in some of the pictures, it was a trial keeping yards clean. In early February, things mellowed a bit here and we are hopeful that the rest of the winter will not be a repeat of 2019. The Bomb Cyclone in Nebraska was something no one wants to experience again. The Cedar River, about a half mile out our front door, ran as deep at 20 feet plus (1 to 3 feet is typical) for a few days...wreaking havoc on our area, as rivers did all across the state. The wet spring and summer that followed challenged everyone in the area. More cropland was barren this year than we can ever remember. But we survived; #NebraskaStrong.

Despite the trials, this year's offering looks super – headlined by a couple yards of stout herd bull prospects. If you need new bull power or some fancy opens, pairs with all the work done, or even elite breds...you can find them here. We think you will find quality with good looks that read great on paper also. The bulls and heifers were both developed on minimal NEG diets and the breds/pairs were treated like typical cows...grazing stalks until close to calving. No over-conditioned ones here. Come take a look and see for yourself...the time is right for Simmental and SimAngus™ genetics.

All the kids are growing up. Terrick is a 6th grader, Teagan is a freshman, Tres and Cole are Juniors, and Shay is in her 2nd year at Wayne State College. Aside from the farm, any spare time revolves around kids' sports. Some highlights this year were a Class B State

runner up in American Legion Baseball for Tres, a Class C Team State Runner Up in Track for Cole, where he qualified in 3 events, and a Class B ASA state runner up for Teagan in Softball. Teags also qualified in 3 events for state track, medaling in 2. Terrick got to bask in the glory of winning his 6th grade basketball league and finishing 2nd in his football league. Currently, Tres and Cole both start on Fullerton's basketball team (15-5), which is making a push for a 3rd consecutive state tournament, and Teags is the 1st sub, with a few starts mixed in, on the Fullerton girls basketball team, with a record of 16-4. They will all be on to baseball and track soon. There were team player of the year awards, all conference, all district, all area, and various honorable mention all-state awards, but they have all learned to appreciate the team wins more, rather than individual honors. Winning is fun, but the true rewards in sports are the experiences gained with your friends, as well as the lessons learned.

Back to the sale...Yes, it was a trying year that tested our mettle. Yes, we made it through. Give us a call if you'd like to talk about the sale offering. Feel free to come take a look at any time. This being our 20th sale, there might be a surprise or 2 in store for sale day. We strive to continue to keep our customers happy and provide quality genetics. Hope to see you on the 15th of March.

**Scott Gonsior**  
**Gonsior Simmentals**



# Selling 102 Lots on March 15...

**Black & Red Polled SimGenetics including  
Spring & Fall Herd Bull Prospects, Elite  
Bred Females & Cow/Calf Pairs,  
Fancy Open Heifers, Embryos & Semen!**

## SCHEDULE:

**SATURDAY, MARCH 14, 2020**.....Viewing of Sale Cattle  
**SUNDAY, MARCH 15, 2020**

8:00 am .....Viewing of Sale Cattle  
11:00 am .....Complimentary Lunch  
**12:30 PM**.....**Gonsior Simmental 20th Annual  
"In The Heartland" Production Sale**

## Directions to Gonsior Farms Sale Facility:

One mile north of Fullerton, NE, on Hwy. 14. On Hwy. 14-22 Junction turn east. Go 3 miles on Hwy. 22 to Gonsior farm.

## Air Transportation:

Omaha, NE ..... 110 miles from sale site  
Albion, NE ..... 25 miles from sale site

## Motel Headquarters:

Fullerton Inn ..... 308-536-2699

**Sale Terms:** All cattle sell under the suggested sale Terms & Conditions of the American Simmental Association.

**Livestock Insurance:** Insurance available through Twin Rivers Insurance, Steve Nathan, Agent, 308-550-1923.

**EPDs:** Please note that EPDs may change from the time the sale catalog is printed until registration paper is transferred. EPDs are BOLT 2-4-20 numbers.

**Sale Order & Updates:** Additional information and sale order can be found on the Eberspacher Enterprises web site and Facebook page. Like us and receive updates automatically. Download the EE smart phone App for all current sale information.

**Announcements:** Announcements made sale day and from the auction block during the sale take precedence over printed material in the catalog or other printed material associated with this sale. Anyone attending this sale, attends at their own risk. Breeders or any of the sale force will not be held responsible for any injury while attending this sale.

**Auctioneer:** Col. Tracy Harl..... 402-469-3852

## Marketing Agents:

Val Eberspacher, EE Sales ..... 612-805-7405  
Derek Vogt, EE Sales ..... 308-750-5216  
Chris Beutler, Lee Agri-Media..... 402-648-7473 or 402-380-8244  
Ronald Miller ..... Home 402-296-3090 or Cell 402-297-6329  
Randy Rasby, Livestock Plus ..... 308-386-4857  
Rick Buehler..... 402-239-8047  
Tom Sonderup ..... 308-550-0254  
Buddy Robertson ..... 580-747-7000  
Nate Jelinek ..... 402-270-2680  
Myron Benes..... 402-741-2040



View sale  
catalog  
online with  
this QR Code.



## SALE DAY PHONES:

**Scott Cell: 308-550-0739**

**Gage Cell: 308-624-0607**

**Mike Cell: 308-550-0742**

**Tres Cell: 308-550-0693**

**Val Cell: 612-805-7405**

Gonsior Simmentals will retain 1/3 semen interest on all bulls selling unless otherwise noted. We will keep the bulls FREE until April 15, 2020, and at cost after that date!

**\$100 off the cost of your bull  
if you haul sale day!**

# GONSIOR SIMMENTALS

26262 N. Osage Rd., Fullerton, NE 68638

E-mail: sgonsior3@gmail.com

**Scott & Amy Gonsior 308-536-9607 or 308-550-0739**

**Gage Horacek 308-624-0607**

**Mike Gonsior 308-550-0742**

**Jason & Shelli Horacek 308-550-0102**

**www.gonsiorsimmentals.com**

## GUEST BREEDERS:

Elm Mound Farms Darin Johnson ..... 970-481-1144  
Pischel Simmentals Rob Pischel ..... 402-394-7200

## PARTNERSHIPS:

Buehler Show Cattle, Two Rivers Livestock, Square D, Sonderup, Gulbranson Cattle, B/D Cattle, Mottl

**Unable to attend in  
person? Bid online at...**

**LiveAuctions.TV**

For more information call Live Auctions Support 800-431-4452

## SALE PROFESSIONALLY MANAGED BY:

**Eberspacher**  
ENTERPRISES INC.

View catalog and sale results  
at [www.ebersale.com](http://www.ebersale.com)



Val and Lori Eberspacher  
2904 Co Rd 6, Marshall, MN  
**sales@ebersale.com**  
**Office: 507-532-6694**  
**Val's Cell: 612-805-7405**  
Fax: 507-532-9457  
[www.ebersale.com](http://www.ebersale.com)





**Miss Werning KP 8543U,  
Grandam**

**LOT  
1**

## Gonsior Full Metal Jacket F398

**Dbl. Black Dbl. Polled Purebred Bull**

CE	BW	WW	YW	ADG	MCE	MM	MWW	STAY	DOC	CW	YG	MARB	BF	REA	API	TI
11	1.6	71	104	.21	5	25	60	16	12.9	32.3	-.56	.08	-.118	1.10	128	73

#3621710  
Tattoo: F398  
BD: 8-30-18  
Act. BW: 86  
Adj. WW: 665

Kappes Mile High B11

Gonsior 9B

Remington Lock N Load  
Miss Werning KP 8543U  
Triple C Singletary S3H  
SS Valentine Z018

F398's older brother sold to Deon Gocke a few years ago for use in his purebred herd. We think this one is a breeder bull also. Sound, stout, muscular, eye appealing and out of the great Milo. Solid EPDs to boot. Plus he's got a cool name. Don't miss Full Metal Jacket.

**LOT  
2**

## Gonsior Miles And Miles F395

**Dbl. Black Dbl. Polled Purebred Bull**

CE	BW	WW	YW	ADG	MCE	MM	MWW	STAY	DOC	CW	YG	MARB	BF	REA	API	TI
10	1.8	65	95	.19	6	23	55	17	7.5	24.9	-.46	-.10	-.123	.67	116	64

#3621716  
Tattoo: F395  
BD: 9-21-18  
Act. BW: 86  
Adj. WW: 688

JF Milestone 999W

Gonsior Ynez Y105

TNT Top Gun R244

Ms. Maxie Lou M1125

Gonsior/JZ Ebony's Shock

GS Miss Jordan J17

Huge footed, masculine specimen out of Milestone. This one commands a presence. Watch him move around like a king. From the Blazey cow family, he'll be a top pick.



**LOT  
3**

## Gonsior Full Of Glitter F393

**Black Dbl. Polled 3/4 SM 1/4 AN Bull**

CE	BW	WW	YW	ADG	MCE	MM	MWW	STAY	DOC	CW	YG	MARB	BF	REA	API	TI
12	1.0	64	93	.18	4	22	54	16	8.9	25.8	-.44	.20	-.093	.85	123	68

#3621714  
Tattoo: F393  
BD: 9-29-18  
Act. BW: 83  
Adj. WW: 605

W/C Fully Loaded 90D

SS Glitters Look

W/C Loaded Up 1119Y  
Miss Werning KP 8543U  
B C Lookout 7024  
HHSF Black Glitter

Growthy Fully Loaded fall bull. His mother is a BC Lookout out of the great Glitter female. Take a look at this SimAngus™ stud.





W/C  
Relentless  
32C, Sire

LOT  
4

## Gonsior Relenting F381

Dbl. Black Dbl. Polled Purebred Bull

CE	BW	WW	YW	ADG	MCE	MM	MWW	STAY	DOC	CW	YG	MARB	BF	REA	API	TI
7	4.2	65	90	.16	3	20	53	14	9.9	17.7	-.45	.01	-.105	.68	106	63

#3621717  
Tattoo: F381  
BD: 9-9-18  
Act. BW: 91  
Adj. WW: 615

W/C Relentless 32C  
ETR Love Me Now T523

Yardley Utah Y361  
Miss Werning KP 8543U  
STF Montana Black KF 25  
NJC SVF Love Me Dont U

Relentless is one of the hottest show heifer sires in the breed now... so naturally a mating to a daughter of the great show heifer Love Me Dont U could be interesting. Growthy, complete bull. Use him to make a group of Relentless granddaughters.

Full Sister of  
Lot 5 shown  
by Jaycee  
Schomberg



LOT  
5

## Gonsior/BSC Hez Primo F391

Dbl. Black Dbl. Polled 1/2 SM 1/2 AN Bull

CE	BW	WW	YW	ADG	MCE	MM	MWW	STAY	DOC	CW	YG	MARB	BF	REA	API	TI
11	2.0	68	101	.20	8	18	52	11	8.9	18.5	-.15	.26	-.028	.38	112	69

#3621709  
Tattoo: F391  
BD: 8-26-18  
Act. BW: 80 ET  
Adj. WW: 635

Colburn Primo 5153  
Gonsior Perfect Mile B3

Dameron First Class  
Silveiras Saras Dream 1339  
JF Milestone 999W  
CNS Perfection S603

A Primo out of the Perfect Mile donor... who is now owned by Dr. Josh Ervin in Ohio. This larger framed growth bull should put extra performance in a group of calves. A full sibling sister has had a successful winter show season to this point. Offered with Buehler.

LOT  
6

## Gonsior Milo F380

Dbl. Black Dbl. Polled 3/4 SM 3/16 AN 1/16 CS Bull

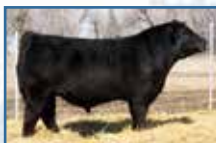
CE	BW	WW	YW	ADG	MCE	MM	MWW	STAY	DOC	CW	YG	MARB	BF	REA	API	TI
12	.7	68	101	.20	6	22	56	13	12.9	27.7	-.54	.02	-.119	1.00	121	71

#3621700  
Tattoo: F380  
BD: 10-10-18  
Act. BW: 80  
Adj. WW: 610

Kappes Mile High B11  
CMB Polly B428

Remington Lock N Load 54U  
Miss Werning KP 8543U  
LLSF Uprising Z925  
CMB Polly P28

Big stout Milo son out of a very nice Uprising cow from C-Mor Beef. These falls will be able to handle plenty of cows. Nice phenotype and numbers.



Kappes Mile High B11 (Milo), Sire







SS Babys  
Breath  
P035,  
Grandam

LOT  
7

## Gonsior Shearshock F016

Dbl. Black Dbl. Polled Purebred Bull

CE	BW	WW	YW	ADG	MCE	MM	MWW	STAY	DOC	CW	YG	MARB	BF	REA	API	TI
14	-1.0	64	86	.14	7	27	59	20	16.0	22.3	-.56	.20	-.112	1.04	146	76

#3677872  
Tattoo: F016  
BD: 10-12-18  
Act. BW: 77  
Adj. WW: 630

Hooks Shear Force 38K  
HILB Dakota Love A0165

Nichols Legacy G151  
C&D Tracy  
R&R Chamberlain X744  
SS Babys Breath P035

Good looking stout fall bull. Shear Force out of a Baby's Breath daughter. This dude has the look. Great calving ease numbers and a big API.

LOT  
8

## Gonsior Walk The Mile F392

Dbl. Black Dbl. Polled Purebred Bull

CE	BW	WW	YW	ADG	MCE	MM	MWW	STAY	DOC	CW	YG	MARB	BF	REA	API	TI
11	.6	61	91	.19	5	25	55	18	10.2	31.5	-.58	-.02	-.135	1.05	124	66

#3621718  
Tattoo: F392  
BD: 10-7-18  
Act. BW: 80  
Adj. WW: 630

Kappes Mile High B11  
Gonsior Akila A28

Remington Lock N Load 54U  
Miss Werning KP 8543U  
TBSF/GS Mr. Macho 30T  
Meyers 007

Balanced EPDs in this Milo son. Very muscular, structurally sound bull. Dam, A28, is moderate, easy fleshing and a big milker.



Kappes Mile High B11, Sire



Schiefelbein Effective 61, Sire

LOT  
9

## Gonsior G99

Dbl. Black Dbl. Polled 1/2 SM 1/2 AN Bull

CE	BW	WW	YW	ADG	MCE	MM	MWW	STAY	DOC	CW	YG	MARB	BF	REA	API	TI
15	-.2	68	105	.23	7	26	60	15	11.4	27.9	-.18	-.43	-.026	.59	141	77

#3671031  
Tattoo: G99  
BD: 1-29-19  
Act. BW: 77  
Adj. WW: 699

Schiefelbein Effective 61  
SS Emerson E785

CAR Efficient 534  
Frosty Answer 3979  
TKCC Classified  
SVF/NJC Magnetic Ldy M25

Calving ease, growth, high API and TI... here's your bull. A Schiefelbein Effective out of a Magnetic Lady daughter. Use him in any scenario.





GSC GCCO  
Dew North  
102C, Sire

LOT  
10

## Gonsior Northbound G305

Dbl. Black Dbl. Polled 5/8 SM 3/8 AN Bull

CE	BW	WW	YW	ADG	MCE	MM	MWW	STAY	DOC	CW	YG	MARB	BF	REA	API	TI
14	-3	79	116	.23	8	20	60	13	10.5	40.0	-.27	.18	-.062	.77	126	78

#3671040  
Tattoo: G305  
BD: 2-3-19  
Act. BW: 70  
Adj. WW: 685

GSC GCCO Dew North 102C

RS&T Weigh Up E305

HTP/SVF Duracell T52

Welsh's Scarlet 161Z

CH Byergo Weigh Out 401

RS&T Lola Dreamie A309

This Dew North son offers big growth and a full jar of genetic marbles! His dam was purchased from RS & T and did very well on her first try. Good calving ease choice.



LOT  
11

## Gonsior Red Excite G97

Red Homo. Polled 5/8 SM 3/8 AN Baldy Bull

CE	BW	WW	YW	ADG	MCE	MM	MWW	STAY	DOC	CW	YG	MARB	BF	REA	API	TI
13	.6	77	119	.26	6	26	65	14	11.3	37.7	-.28	.20	-.054	.82	128	77

#3671020  
Tattoo: G97  
BD: 2-5-19  
Act. BW: 85  
Adj. WW: 643

W/C Executive Order 8543B

PILK Lock Down 87

W/C United 956Y

Miss Werning KP 8543U

W/C Lock Down 206Z

Gonsior Chambray C13

Red baldy by Executive Order. Dam is a moderate Lock Down female that did well on her first calf.

LOT  
12

## Gonsior/2RL Reloaded G92

Dbl. Black Dbl. Polled Purebred Bull

CE	BW	WW	YW	ADG	MCE	MM	MWW	STAY	DOC	CW	YG	MARB	BF	REA	API	TI
12	1.0	57	82	.15	7	21	49	18	7.8	32.4	-.42	.07	-.102	.83	126	65

#3680934  
Tattoo: G92  
BD: 2-10-19  
Act. BW: 80  
Adj. WW: N/A

W/C Loaded Up 1119Y

2RL Preferred X04

Remington Lock N Load 54U  
Aubreys Black Blaze III  
Gonsior/TRL Preference  
Ms. M 211

Good looking Loaded Up purebred. Offers growth with CE. Dam traces back to Preferred Beef and the Blazey cow family. Nice EPDs. Offered with Two Rivers Livestock.



Loaded Up, Sire







JF Back In Black 406B, Sire

LOT 13

## Gonsior Blackice G95

Dbl. Black Dbl. Polled Purebred Baldy Bull

CE	BW	WW	YW	ADG	MCE	MM	MWW	STAY	DOC	CW	YG	MARB	BF	REA	API	TI
13	-.2	54	78	.15	6	19	46	13	6.0	23.5	-.38	-.11	-.095	.62	110	60

#3670952  
Tattoo: G95  
BD: 2-8-19  
Act. BW: 75  
Adj. WW: 645

JF Back In Black 406B

Gonsior Shera's Dream

STF Royal Affair Z44M

Zeis PCGF Perfection

GS Mr. Apache H9

GS Miss Red Shera E20

This baldy has been a favorite all year. Sired by Back In Black, his baldy face will catch your eye. His mother is a super baldy that has been around for years. Stout and masculine.

LOT 14

## Gonsior Roadgrader G93

Dbl. Black Dbl. Polled Purebred Bull

CE	BW	WW	YW	ADG	MCE	MM	MWW	STAY	DOC	CW	YG	MARB	BF	REA	API	TI
11	.7	64	90	.16	3	23	55	16	11.6	19.7	-.60	-.03	-.143	.89	119	67

#3671026  
Tattoo: G93  
BD: 2-10-19  
Act. BW: 81 ET  
Adj. WW: 705

Mr. NLC Upgrade U8676

Gonsior Dreamcatcher T203

Ellingson Legacy M229

Ms. NLC Mojo S6119 B

SS Goldmine L42

STF Dream Catcher 162L

ET full brother to the \$17,000 Roadgrader who worked very well for Gateway and Gana for several years. He's got all the right parts to be a big time herd bull. Donor dam, T203, was hit by lightning shortly after this IVF flush... there will be no more.



Gonsior Roadgrader A292, Full Brother



LOT 15

## Gonsior Gary G91

Dbl. Black Dbl. Polled Purebred Baldy Bull

CE	BW	WW	YW	ADG	MCE	MM	MWW	STAY	DOC	CW	YG	MARB	BF	REA	API	TI
12	.4	49	70	.14	4	19	44	16	9.1	18.1	-.48	-.27	-.112	.73	103	52

#3670936  
Tattoo: G91  
BD: 2-12-19  
Act. BW: 79  
Adj. WW: 532

JF Back In Black 406B

Gonsior/AS Mystic Path

STF Royal Affair Z44M

Zeis PCGF Perfection

Lazy H Pathfinder R104

Gonsior Mystify M14

The Blazey granddaughter, U48, has been around for years and continues to produce good ones. Another Back In Black baldy to take a look at.



LOT  
16**Gonsior Godzilla G88**

Dbl. Black Dbl. Polled Purebred Bull

CE	BW	WW	YW	ADG	MCE	MM	MWW	STAY	DOC	CW	YG	MARB	BF	REA	API	TI
15	-1.9	58	84	.16	7	26	55	14	6.1	17.7	-.46	-.01	-.100	.75	125	68

#3670958  
Tattoo: G88  
BD: 2-15-19  
Act. BW: 73  
Adj. WW: 588

W/C Executive Order 8543B

Gonsior Chrissy C37

W/C United 956Y  
Miss Werning KP 8543U  
HILB Direct Deposit  
Gonsior Ynez Y105

Godzilla sure looks like the type to raise great feeding, efficient steers. Looking at his EPDs, his daughters might be pretty swell in production too. Blazey cow family here.

LOT  
17**Gonsior Valentino G89**

Dbl. Black Dbl. Polled 3/4 SM 1/4 AN Baldy Bull

CE	BW	WW	YW	ADG	MCE	MM	MWW	STAY	DOC	CW	YG	MARB	BF	REA	API	TI
14	.0	73	109	.22	7	20	57	16	9.6	44.0	-.38	.18	-.084	.99	129	74

#3670987  
Tattoo: G89  
BD: 2-14-19  
Act. BW: 82  
Adj. WW: 675

Elm-Mound/GS LD D340

Gonsior Antoinette Z301

W/C Lock Down 206Z  
HILB/SHER Lookin Hot  
Mr. NLC Upgrade U8676  
Ms. ETR Antoinette L120

Long as a train, Valentino is a Lockdown U baldy out of an Ebony Antoinette granddaughter. You guessed it, Valentino was born on February 14th.



W/C Lock Down  
206Z, Grandsire

LOT  
18**Gonsior Loadlimit G83**

Dbl. Black Homo. Polled 1/2 SM 1/2 AN Bull

CE	BW	WW	YW	ADG	MCE	MM	MWW	STAY	DOC	CW	YG	MARB	BF	REA	API	TI
19	-.8	58	88	.19	9	21	50	20	12.2	28.7	-.21	.44	-.024	.74	153	72

#3671019  
Tattoo: G83  
BD: 2-19-19  
Act. BW: 86 ET  
Adj. WW: 715

W/C Loaded Up 1119Y

AR Ideal 345 854E 807

Remington Lock N Load 54U  
Aubreys Black Blaze III  
O C C Emblazon 854E  
A R 345 Ideal 761C EXT

Loaded Up ET out of our Advantage Angus donor...G83 will catch everyone's eye. He looks like the type to make some very classy SimAngus™ females, and has a big 153 API.



AR Ideal 345 854E  
807, Dam



W/C Loaded Up  
1119Y, Sire







W/C Executive Order, Sire



O C C Juanada 673N, Grandam

LOT 19

## Gonsior/2RL In Order G90

Red Homo. Polled 5/8 SM 3/8 AN Bull

CE	BW	WW	YW	ADG	MCE	MM	MWW	STAY	DOC	CW	YG	MARB	BF	REA	API	TI
15	-7	63	92	.18	5	21	52	12	8.2	27.8	-.25	.07	-.046	.65	114	65

#3680298  
Tattoo: G90  
BD: 3-7-19  
Act. BW: 83  
Adj. WW: N/A

W/C Executive Order 8543B

Gonsior2RL Steel Juanada

W/C United 956Y  
Miss Werning KP 8543U  
SVF Steel Force S701  
O C C Juanada 673N

Here's a stud of a red bull sired by Executive Order. On the bottom side, he's certainly intriguing as well...with his dam being a Steel Force out of the great OCC Juanada 673N donor cow. Don't miss In Order! Offered with Two Rivers.

Plan to attend  
on July 5-11, 2020  
Celebrating the  
40th Anniversary  
of the AJSA  
Classic!



LOT 20

## Gonsior Betterbeef G82

Red DbL. Polled Purebred Bull

CE	BW	WW	YW	ADG	MCE	MM	MWW	STAY	DOC	CW	YG	MARB	BF	REA	API	TI
9	3.3	78	115	.23	6	19	58	17	12.3	37.6	-.46	.20	-.106	.96	134	78

#3671018  
Tattoo: G82  
BD: 2-19-19  
Act. BW: 95  
Adj. WW: 680

WS Beef Maker R13

Gonsior Alicia A31

Hooks Shear Force 38K  
DCR Ms. Ribeye N72  
BCLR Ammo W513-1  
Gonsior/JC M2842

Betterbeef is one of the performance growth bulls in the sale. He has a touch more frame and has the big growth EPD rankings. His mother is a growthy, solid red cow.

LOT 21

## Gonsior Cowboy Jim G79

DbL. Black DbL. Polled Purebred Bull

CE	BW	WW	YW	ADG	MCE	MM	MWW	STAY	DOC	CW	YG	MARB	BF	REA	API	TI
13	1.5	80	111	.19	6	21	61	19	14.2	36.6	-.44	-.20	-.098	.97	145	81

#3670965  
Tattoo: G79  
BD: 2-20-19  
Act. BW: 82  
Adj. WW: 696

CCR Cowboy Cut 5048Z

Gonsior Antoine X31

Triple C Singletary S3H  
CCR Ms. 4045 Time 7322T  
GWS Ebony's Trademark 6N  
Circle T Dream Antoinette



CCR Cowboy Cut 5048Z, Sire

Sure like what we are seeing from the Cowboy Cut cattle. He puts the body on them for sure. This stout, fleshy bull will be a top choice. Big growth and high API/TI.





Gonsior The Beacon F80,  
\$20,000  
Maternal  
Brother

LOT  
22

## Gonsior Red Red Wine G76

Red Dbl. Polled Purebred Bull

CE	BW	WW	YW	ADG	MCE	MM	MWW	STAY	DOC	CW	YG	MARB	BF	REA	API	TI
12	1.7	78	119	.26	4	23	62	13	10.4	34.9	-.44	.13	-.095	.97	128	78

#3670968  
Tattoo: G76  
BD: 2-23-19  
Act. BW: 94  
Adj. WW: 673

W/C Executive Order 8543B

AS Diamond 20C

W/C United 956Y  
Miss Werning KP 8543U  
W/C Wide Track 694Y  
WRS Emerald Z216

Need a red one? Red Red Wine is a maternal brother to the \$20,000 The Beacon bull that Dean is running now at Volk Cattle. This Executive Order son has a good look and a pleasing EPD profile.

LOT  
23

## Gonsior Grandstage G74

Dbl. Black Dbl. Polled 5/8 SM 3/8 AN Bull

CE	BW	WW	YW	ADG	MCE	MM	MWW	STAY	DOC	CW	YG	MARB	BF	REA	API	TI
11	1.6	69	108	.24	4	22	56	16	12.8	25.2	-.33	.15	-.057	.79	121	69

#3670999  
Tattoo: G74  
BD: 2-25-19  
Act. BW: 76  
Adj. WW: 656

Brant.Jazzy Steakout  
SC Driven Ms. Ruby Z8

B C Lookout 7024  
Brant Alexandria A3077  
HC Power Drive 88H  
SC Show Me Ruby T8

A growthy Steakout son from an excellent PowerDrive cow. Ratio's of 110 BW and 108 WW. He'd be one of my picks for a good growth choice.



Brant.Jazzy Steakout,  
Sire

LOT  
24

## Gonsior Gordo G70

Dbl. Black Dbl. Polled 5/8 SM 3/8 AN Bull

CE	BW	WW	YW	ADG	MCE	MM	MWW	STAY	DOC	CW	YG	MARB	BF	REA	API	TI
11	2.9	82	118	.23	4	22	63	16	12.4	27.4	-.40	.20	-.074	.90	124	76

#3671009  
Tattoo: G70  
BD: 3-2-19  
Act. BW: 103  
Adj. WW: 801

Brant.Jazzy Steakout  
Ms. Aunt Twiggie Y73

B C Lookout 7024  
Brant Alexandria A3077  
Triple C Bettis S72J  
J&C Ms. Throwdown X07

Here's the SimAngus™ performance king of the hill. The 800# adj. weaning weight barrier is magical here...and Gordo surpassed that number, at 801 pounds to ratio 122...on a year that limited top performance. Put him on your mature cows and wean them heavy!

LOT  
25

## Gonsior Glassman G77

Dbl. Black Dbl. Polled 1/2 SM 1/2 AN Bull

CE	BW	WW	YW	ADG	MCE	MM	MWW	STAY	DOC	CW	YG	MARB	BF	REA	API	TI
11	.8	78	116	.24	6	27	66	19	10.6	45.0	-.21	.32	-.041	.79	139	79

#3671001  
Tattoo: G77  
BD: 2-21-19  
Act. BW: 88  
Adj. WW: 724

Elm-Mound/GS LD D340  
Gonsior Newslady U204

W/C Lock Down 206Z  
HILB/SHER Lookin Hot  
Lemmon Newslane C804  
Brant N3192

Glassman is another growth bull. Big 119 WW ratio. Solid numbers. A good choice for siring heavy weaning calves.





Gonsior/WRS First Kiss, Grandam

LOT 26

## BUE Gunner G45

**DbL. Black DbL. Polled 5/8 SM 3/8 AN Bull**

CE	BW	WW	YW	ADG	MCE	MM	MWW	STAY	DOC	CW	YG	MARB	BF	REA	API	TI
14	-.1	69	102	.21	7	26	60	11	10.4	28.2	-.27	.23	-.053	.67	119	73

#3677298  
Tattoo: G45  
BD: 2-4-19  
Act. BW: 83  
Adj. WW: 755

W/C Executive Order 8543B  
Phoenix

W/C United 956Y  
Miss Werning KP 8543U  
Plainview Lutton E102  
Gonsior/WRS First Kiss

A stout Executive Order out of a first calf heifer, who happens to be a Lutton out of the First Kiss donor, now at Dr. Josh Ervin's in Ohio. Make amazing replacements or great feeder steers. Sappy belly, great front, plenty of bone, yet still smooth. A calving ease choice as well.  
*Offered with Buehler Show Cattle.*



LOT 27

## Gonsior G98

**DbL. Black DbL. Polled 3/4 SM 1/4 AN Baldy Bull**

CE	BW	WW	YW	ADG	MCE	MM	MWW	STAY	DOC	CW	YG	MARB	BF	REA	API	TI
13	.5	61	90	.18	5	18	49	11	8.3	30.4	-.42	.07	-.095	.83	107	63

#3670926  
Tattoo: G98  
BD: 2-1-19  
Act. BW: 80  
Adj. WW: 584

Lazy H Pathfinder R104  
BBarH Miss Uppity D36B

CNS Dream On L186  
Drake Miss P36D  
Mr. NLC Upgrade U8676  
Moffitt Norris Pride



Lazy H Pathfinder R104, Sire

Eye appealing, Pathfinder sired. Long made bull that should produce stretchy calves. Very easy going attitude.



LOT 28

## GS/MRMS Guru 98G

**DbL. Black DbL. Polled Purebred Baldy Bull**

CE	BW	WW	YW	ADG	MCE	MM	MWW	STAY	DOC	CW	YG	MARB	BF	REA	API	TI
12	1.2	81	121	.25	6	20	60	15	10.6	39.2	-.39	.14	-.089	.89	136	80

#3669672  
Tattoo: 98G  
BD: 2-13-19  
Act. BW: 81  
Adj. WW: 670

CDI Innovator 325D  
Gonsior Shez Wheelin E8

TJ Main Event 503B  
CDI Ms. Shear Force 49U  
SVF Steel Force S701  
SVF Star Struck S199



CDI Innovator 325D, Sire

Double-bred Denver Champions here...98G is a CDI Innovator out of a full sister to Wheelman. Body and muscle with a baldy face and a good look. He's gentle as a kitten and has EPDs that will work anywhere. Don't miss Guru.  
*Offered with Mottl.*





S A V  
Blackbird  
1082,  
Grandam

LOT  
29

## Gonsior/BSC Birdshot G082

Dbl. Black Dbl. Polled 1/2 SM 1/2 AN Bull

CE	BW	WW	YW	ADG	MCE	MM	MWW	STAY	DOC	CW	YG	MARB	BF	REA	API	TI
12	1.9	68	104	.22	7	23	58	16	11.3	48.1	-.28	.23	-.044	1.02	125	69

#3679526  
Tattoo: G082  
BD: 2-8-19  
Act. BW: 83  
Adj. WW: 768

W/C Loaded Up 1119Y

Gonsior Blackbird SAV 1082E

Remington Lock N Load  
Aubreys Black Blaze III  
PVF Insight 0129  
S A V Blackbird 1082

What do you get when you put Loaded Up on a super Schaff-bred Angus female? A super SimAngus™ herdbull prospect like Birdshot. A stud from the ground up. Boy, his daughters could be smokin' good.  
Offered with Buehler Show Cattle.



LOT  
30

## Gonsior/BSC Excitement G78

Dbl. Black Dbl. Polled Purebred Baldy Bull

CE	BW	WW	YW	ADG	MCE	MM	MWW	STAY	DOC	CW	YG	MARB	BF	REA	API	TI
12	.5	75	114	.24	5	25	63	13	8.9	17.6	-.44	.07	-.095	.73	127	77

#3671010  
Tattoo: G78  
BD: 2-21-19  
Act. BW: 86 ET  
Adj. WW: 640

W/C Executive Order 8543B

Gonsior Perfect Mile B3

W/C United 956Y  
Miss Werning KP 8543U  
JF Milestone 999W  
CNS Perfection S603

Growthy Executive Order out of the Perfect Mile donor. Baldy face with growth and calving ease bred in. Take a look at the EPDs. Had brothers sell well last year.  
Offered with Buehler Show Cattle.

LOT  
31

## Gonsior Godspeed G72

Dbl. Black Dbl. Polled Purebred Bull

CE	BW	WW	YW	ADG	MCE	MM	MWW	STAY	DOC	CW	YG	MARB	BF	REA	API	TI
12	1.1	82	126	.27	5	22	63	16	11.2	44.5	-.52	.03	-.109	1.23	132	79

#3670979  
Tattoo: G72  
BD: 3-1-19  
Act. BW: 86  
Adj. WW: 785

Kappes Mile High B11

SVF Empriss X334

Remington Lock N Load 54U  
Miss Werning KP 8543U  
Mr. NLC Upgrade U8676  
SS Empriss T091

A long bodied man! Big growth numbers, with a high API and TI. His dam is an Empriss daughter. Don't miss his 120 ratio at weaning. Raise the heavy steers here!







O C C Juanada 673N,  
Dam Lots 32 & 33



SVF Steel Force, Sire



### LOT 32 **Gonsior Steel Looker G74**

Dbl. Black Homo Polled 1/2 SM 1/2 AN Bull

CE	BW	WW	YW	ADG	MCE	MM	MWW	STAY	DOC	CW	YG	MARB	BF	REA	API	TI
13	.1	58	84	.16	3	14	43	13	8.4	21.6	-.19	.11	-.023	.59	111	61

#3671033

Tattoo: G740

BD: 3-1-19

Act. BW: 83 ET

Adj. WW: 694

Pedigree for Lots 32 & 33:

SVF Steel Force S701

O C C Juanada 673N

CNS Dream On L186

SVF Sheza Beauty L901

O C C Judge 679J

O C C Juanada 818E

Tried and true. Here are 2 ET flushmate Steel Force's from our Juanada 673N donor. Great look, swell pedigree. Make some awesome steers and sweet SimAngus™ replacements. Steel Force granddaughters are always in demand.

### LOT 33 **Gonsior Steel Struck G52**

Dbl. Black Homo. Polled 1/2 SM 1/2 AN Bull

CE	BW	WW	YW	ADG	MCE	MM	MWW	STAY	DOC	CW	YG	MARB	BF	REA	API	TI
13	-.5	52	75	.14	3	15	42	13	8.4	16.0	-.19	.11	-.023	.52	109	58

#3671022 Tattoo: G52 BD: 3-14-19 Act. BW: 93 ET Adj. WW: 605

### LOT 34 **Gonsior Orderly G90**

Dbl. Black Dbl. Polled 5/8 SM 3/8 AN Bull

CE	BW	WW	YW	ADG	MCE	MM	MWW	STAY	DOC	CW	YG	MARB	BF	REA	API	TI
17	-1.7	80	122	.26	7	26	66	13	12.7	34.1	-.27	.30	-.044	.81	140	84

#3670954

Tattoo: G90

BD: 2-14-19

Act. BW: 74

Adj. WW: 733

W/C Executive Order 8543B

Gonsior Delores D302

W/C United 956Y

Miss Werning KP 8543U

Schiefelbein Effective 61

Dillons Time For Kisses

First calf fall heifer, D302, did a great job with her first son by Executive Order. Ratio'd 107 at birth and a whopping 121 at weaning. Monstrous calving ease and growth here, with a strong API and TI.



W/C Executive Order, Sire





Sandeen  
Upper Class  
2386, Sire

LOT  
35

## Gonsior G71

Dbl. Black Dbl. Polled 3/4 SM 1/4 AN Bull

CE	BW	WW	YW	ADG	MCE	MM	MWW	STAY	DOC	CW	YG	MARB	BF	REA	API	TI
12	1.0	70	103	.20	4	23	58	13	12.9	32.8	-.52	.10	-.102	1.12	115	69

#3670948  
Tattoo: G71  
BD: 3-1-19  
Act. BW: 75  
Adj. WW: 708

Sandeen Upper Class 2386

Gonsior Direct Doll D45

Mr. NLC Upgrade U8676  
Sandeen Donna 7386  
Kappes Mile High B11  
Gonsior Newslady U204

He's got the look. Always have admired the guts Upper Class puts on cattle, and he made one even better with the super mother in this equation. 107 BW ratio and 108 WW ratio. We really like G71.



LOT  
36

## Gonsior Great Divide G66

Dbl. Black Dbl. Polled/Scurred Purebred Bull

CE	BW	WW	YW	ADG	MCE	MM	MWW	STAY	DOC	CW	YG	MARB	BF	REA	API	TI
10	2.7	70	106	.22	3	21	56	13	12.4	31.4	-.56	-.04	-.119	1.12	114	68

#3670993  
Tattoo: G66  
BD: 3-4-19  
Act. BW: 89  
Adj. WW: 631

Kappes Mile High B11

SS Classy

Remington Lock N Load 54U  
Miss Werning KP 8543U  
Sandeen Upper Class 2386  
Double R Miss 29G T18

Mile High out of Terrick's cow, Classy, who is out of the T18 donor cow. He's moderate and soggy. Great Divide would work good to put body on some harder doing cows.

LOT  
37

## Gonsior Stepbro G61

Dbl. Black Dbl. Polled Purebred Bull

CE	BW	WW	YW	ADG	MCE	MM	MWW	STAY	DOC	CW	YG	MARB	BF	REA	API	TI
13	.8	71	101	.19	5	23	58	16	8.1	26.9	-.47	-.01	-.093	.95	125	71

#3670977  
Tattoo: G71  
BD: 3-6-19  
Act. BW: 87  
Adj. WW: 672

Kappes Mile High B11

SS Anika

Remington Lock N Load 54U  
Miss Werning KP 8543U  
HTP SVF In Dew Time  
CLCC SS Snickers

Stepbro is a can't miss Milo son. He's had high selling brothers and sisters. Another top performer, ratioing 111 at weaning.







**Elm-Mound/GS LD D340,  
Sire**

**LOT  
38**

## Gonsior Padlock G193

**Dbl. Black Dbl. Polled 3/4 SM 1/4 AN Baldy Bull**

CE	BW	WW	YW	ADG	MCE	MM	MWW	STAY	DOC	CW	YG	MARB	BF	REA	API	TI
13	-.6	61	93	.20	6	21	52	14	10.2	33.9	-.27	.22	-.049	.77	122	68

#3670973  
Tattoo: G193  
BD: 3-23-19  
Act. BW: 74  
Adj. WW: 632

Elm-Mound/GS LD D340  
Gonsior Believn Destiny

W/C Lock Down 206Z  
HILB/SHER Lookin Hot  
LLSF Pays To Believe ZU194  
JF Empress 1247Y

Can a bull be more eye-appealing? This moderate Lockdown U stud will get your attention. His dam is a beautiful Pays to Believe. You'll like him. Good CE choice.

**LOT  
39**

## Gonsior Builtstrong G58

**Dbl. Black Dbl. Polled Purebred Baldy Bull**

CE	BW	WW	YW	ADG	MCE	MM	MWW	STAY	DOC	CW	YG	MARB	BF	REA	API	TI
13	1.0	62	87	.16	7	24	55	17	6.0	32.4	-.49	-.04	-.129	.83	122	65

#3670962  
Tattoo: G58  
BD: 3-10-19  
Act. BW: 81  
Adj. WW: 614

SVF/NJC Built Right N48  
SS Sappire Z31

CNS Dream On L186  
NJC Ebony Antoinette  
Mr. NLC Upgrade U8676  
SVF NJC Magnetic Ldy M25

Put this guy on some Angus cows and make some salty SimAngus™ females. Super appealing baldy who is double-bred Ebony Antoinette..yes, he's a Built Right.



**SVJ/NJC Built Right, Sire**



**Kappes Mile High B11, Sire**

**LOT  
40**

## Gonsior Gorilla G53

**Dbl. Black Dbl. Polled 1/2 SM 1/2 AN Bull**

CE	BW	WW	YW	ADG	MCE	MM	MWW	STAY	DOC	CW	YG	MARB	BF	REA	API	TI
11	.3	66	99	.21	5	27	60	14	11.6	35.0	-.24	.22	-.036	.81	121	70

#3670969  
Tattoo: G53  
BD: 3-14-19  
Act. BW: 84  
Adj. WW: 724

Kappes Mile High B11  
MF Emma 2340

Remington Lock N Load 54U  
Miss Werning KP 8543U  
MF Net Return 8197  
Koupal SH Emma 718

A nice halfblood choice out of Milo. Good numbers with ratios of 102 and 110 respectively for BW and YW.





Elm-Mound/GS LD D340,  
Sire

SAV Erica 5377,  
Grandam

LOT  
41

## Gonsior Go Pro G199

Dbl. Black Dbl. Polled 1/2 SM 1/2 AN Baldy Bull

CE	BW	WW	YW	ADG	MCE	MM	MWW	STAY	DOC	CW	YG	MARB	BF	REA	API	TI
13	.2	61	93	.20	8	25	55	17	9.7	26.0	-.17	.38	-.033	.50	135	71

#3671027  
Tattoo: G199  
BD: 3-21-19  
Act. BW: 87  
Adj. WW: 605

Elm-Mound/GS LD D340  
Gonsior/SAV Erica B609

W/C Lock Down 206Z  
HILB/SHER Lookin Hot  
HS/TBSF Upgrade 12Y  
S A V Erica 5377

Powerful baldy 1/2 blood out of Lockdown U. On the bottom side, his dam is a super 1/2 blood out of a former Schaff donor cow, SAV Erica.

LOT  
42

## SD/GS Red Ranger G110

Red Dbl. Polled Purebred Bull

CE	BW	WW	YW	ADG	MCE	MM	MWW	STAY	DOC	CW	YG	MARB	BF	REA	API	TI
9	2.6	74	111	.23	4	23	60	17	12.5	37.6	-.50	.01	-.105	1.11	124	72

#3642954 Tattoo: G110 BD: 3-10-19  
Act. BW: 68 Adj. WW: 636

Authority out of a Beefmaker X Lana K's Scarlet Dreams. Very nice red pedigree here. Give him a look for a red growth option. Guessing the females will be excellent replacements as well.  
Offered with Square D.

CDI Authority 77X  
Golden Oak 110Z

NF Trumpp S582  
CDI Ms. Crocket 88T  
WS Beef Maker R13  
GS Lanaks Scarlet Dream



CDI Authority 77X,  
Sire

LOT  
43

## Gonsior Glorius G192

Dbl. Black Dbl. Polled 1/2 SM 1/2 AN Baldy Bull

CE	BW	WW	YW	ADG	MCE	MM	MWW	STAY	DOC	CW	YG	MARB	BF	REA	API	TI
16	-1.5	66	97	.19	7	21	54	15	12.1	27.5	-.29	.28	-.041	.83	135	74

This Steakout SimAngus™ bull has already had several admirers. So smooth made and easy to look at. His Brilliance dam is a sight to behold, with a great udder.

#3671007  
Tattoo: G192  
BD: 3-25-19  
Act. BW: 67  
Adj. WW: 660

Brant.Jazzy Steakout  
Gonsior CHEZ Brilla C4

B C Lookout 7024  
Brant Alexandria A3077  
S A V Brilliance 8077  
Gonsior Upgrada Z303

LOT  
44

## Gonsior/GS Lockdown U G190

Dbl. Black Dbl. Polled 5/8 SM 11/32 AN 1/32 BF Bull

CE	BW	WW	YW	ADG	MCE	MM	MWW	STAY	DOC	CW	YG	MARB	BF	REA	API	TI
12	.7	67	97	.18	6	22	56	16	8.6	30.9	-.26	.21	-.056	.65	123	69

#3670942  
Tattoo: G190  
BD: 4-1-19  
Act. BW: 81  
Adj. WW: 686

Elm-Mound/GS LD D340  
Gonsior Direct Destiny

W/C Lock Down 206Z  
HILB/SHER Lookin Hot  
HILB Direct Deposit  
Gonsior Machetti X49

Another Lockdown U son that offers so much eye appeal and more. His mother is fabulous, and you can bet his calves will be the same.  
Offered with Sonderup.







LOT  
45

## Gonsior/SAC President F370

Dbl. Black Dbl. Polled Purebred Angus Bull

#19653803  
Tattoo: F370  
BD: 8-26-18  
Act. BW: 81  
Adj. WW: 630

S A V President 6847

Gonsior Blackbird SAV C1082

Coleman Charlo 0256  
S A V Blackcap May 4136  
S A V Resource 1441  
S A V Blackbird 1082

Sired by the high selling SAV President, this bull is straight Schaff breeding. Dam is a beautiful Resource out of the great donor Blackbird 1082. Stout and masculine. Buy him here at a fraction of the cost...with the same genetics. Offered with Scott Angus Ranch.



S A V President 6847,  
Sire



S A V Blackbird 1082,  
Grandam



LOT  
46

## Gonsior Capital Funds G767

Dbl. Black Dbl. Polled Purebred Angus Bull

#19653202  
Tattoo: G767  
BD: 3-4-19  
Act. BW: 85  
Adj. WW: 625

LD Capitalist 316

Gonsior Blackbird SAV B1082

Connealy Capitalist 028  
LD Dixie Erica 2053  
S A V Resource 1441  
S A V Blackbird 1082



LD Capitalist 316, Sire

Wowza! LD Capitalist on a Resource X SAV Blackbird 1082. This young stud checks all the boxes. Purebred Angus here that is as fancy as the big boys could make one. Give Capital Funds a look.



LOT  
47

## GUNZ Premeditated G557

Red Dbl. Polled Purebred Red Angus Bull

CED	BW	WW	YW	Milk	ME	HPG	CEM	Stay	Marb	YG	CW	REA	FAT
13	-1.4	68	110	26	2	11	7	16	.34	.12	36	.18	.03

#4208950  
Tattoo: G557  
BD: 3-4-19  
Act. BW: 87  
Adj. WW: 664

Brown AA Predictabull C5748

JFCC Lea 557

Brown JYJ Redemption Y1334  
Brown Ms. Destination T7634  
WEBR TC Card Shark 1015  
Beaver Brook Major Lea 293R



Browns AA Predictabull C5748, Sire

The only Red Angus bull, but he is a good choice with strong performance. Good growth with eye appeal. Sired by the Genex stud, Brown Predictabull.



CNS Queen Me,  
GrandamW/C Executive  
Order 8543B,  
SireLOT  
48**Gonsior Shez Exact F303**

Dbl. Black Dbl. Polled Purebred Female

CE	BW	WW	YW	ADG	MCE	MM	MWW	STAY	DOC	CW	YG	MARB	BF	REA	API	TI
12	.4	72	107	.22	4	21	57	12	9.7	23.9	-.45	.00	-.095	.84	119	73

#3621702  
Tattoo: F303  
BD: 9-5-18  
Act. BW: 80  
Adj. WW: 570

W/C Executive Order 8543B

SVJ Queen Bee A233

W/C United 956Y  
Miss Werning KP 8543U  
SVF Steel Force S701  
CNS Queen Me S613

Donor possibility? F303 is one of several that could make that argument. Stout, long, broody and smooth. She's from the Hollywood Queen cow family. Numbers, pedigree and style. Mother is a super baldy!

LOT  
49**Gonsior In4a Long Haul F305**

Dbl. Black Dbl. Polled Purebred Star Female

CE	BW	WW	YW	ADG	MCE	MM	MWW	STAY	DOC	CW	YG	MARB	BF	REA	API	TI
6	2.0	60	83	.14	3	18	48	12	9.7	18.8	-.40	.11	-.089	.67	110	65

#3621704  
Tattoo: F305  
BD: 9-20-18  
Act. BW: 79  
Adj. WW: 545

STCC Long Haul 033X

RS&amp;T Lola Works A301

STF Shocking Dream SJ14  
Miss Fancy Yardley T85  
DHF Jades Dreamworks  
Triple C Lola M640

STCC Long Haul  
033X, Sire

Heavy boned, huge footed, great haired and stylish... capped with a beautiful star face. This Long Haul purebred checks all the boxes. Her mother is a beautiful cow from RS & T. Give her a look.

LOT  
50**Gonsior Fully Loaded F304**

Hetero. Black Dbl. Polled 3/4 SM 3/16 AN 1/16 BF Female

CE	BW	WW	YW	ADG	MCE	MM	MWW	STAY	DOC	CW	YG	MARB	BF	REA	API	TI
11	.4	63	88	.16	4	25	57	17	9.9	24.5	-.43	.17	-.092	.83	122	67

#3621708  
Tattoo: F304  
BD: 9-7-18  
Act. BW: 71  
Adj. WW: 535

W/C Fully Loaded 90D

Gonsior Machetti X49

W/C Loaded Up 1119Y  
Miss Werning KP 8543U  
3C Macho M450 BZ  
O C C Miss Headliner 322M

Solid black Fully Loaded female. Her dam was one of our best 1/2 blood cows. Make sure you take a look at F304. Fully Loaded is a full sib to Bankroll.







LOT  
51

## Gonsior Long Burn F309

Dbl. Black Dbl. Polled 3/4 SM 1/4 AN Baldy Female

CE	BW	WW	YW	ADG	MCE	MM	MWW	STAY	DOC	CW	YG	MARB	BF	REA	API	TI
11	1.6	59	83	.15	5	19	49	15	12.0	23.9	-.31	.00	-.066	.64	103	58

#3621712  
Tattoo: F309  
BD: 10-28-18  
Act. BW: 77  
Adj. WW: 528

STCC Long Haul 033X

PSCS Recall The Burn 225C

STF Shocking Dream SJ14

Miss Fancy Yardley T85

GCC Total Recall 806T

Lazy H Burn Baby Burn R34

We will certainly have seller's remorse on several of these heifers, and this beauty will be one of the most missed. Long Burn is a STCC Long Haul out of a Total Recall X Burn Baby Burn. The Burn It Up cow family continues to make headlines...let this fancy baldy make them for your operation.



Lazy H Burn Baby Burn R34, Grandam

LOT 52: OUT OF SALE







GFI HF  
Unforgettable  
9A, Grandam

LOT  
53

## Gonsior Gypsy Rose G2

Red Dbl. Polled Purebred Female

CE	BW	WW	YW	ADG	MCE	MM	MWW	STAY	DOC	CW	YG	MARB	BF	REA	API	TI
15	-2.0	63	92	.18	8	26	58	16	2.4	26.5	-.41	.04	-.090	.79	133	72

#3671029  
Tattoo: G2  
BD: 2-9-19  
Act. BW: 65  
Adj. WW: 560

W/C Executive Order 8543B

Gonsior Unforgotten 24Y

W/C United 956Y

Miss Werning KP 8543U

SVF/NJC Built Right N48

GFI HF Unforgettable 9A

We've been eyeing a new red donor for a couple years now...watching several sell. With one swell mating, we made one in Gypsy Rose. We planned on keeping this one since she was young, but several have requested we price her through the fall...so we decided to **offer 1/2 interest** to a new partner. Dark cherry red, solid bone and structure, eye appealing and soft made. Genetically...holy cow! An Executive Order out of a Built Right from the great Unforgettable cow. Cow families represented...8543U, Ebony Antoinette, 9A...that should work. **Possession negotiable.**



LOT  
54

## Gonsior Gracie G04

Dbl. Black Dbl. Polled Purebred Female

CE	BW	WW	YW	ADG	MCE	MM	MWW	STAY	DOC	CW	YG	MARB	BF	REA	API	TI
13	.3	60	88	.17	5	19	49	16	9.9	29.1	-.54	-.11	-.118	1.02	117	63

#3670983  
Tattoo: G04  
BD: 2-11-19  
Act. BW: 76  
Adj. WW: 549

JF Back In Black 406B

Gonsior Delila D31

STF Royal Affair Z44M

Zeis PCGF Perfection

Kappes Mile High B11

Gonsior Antoinette Z301

Sharp, moderate Back In Black female. She won't be big, but she will always look the part. Balanced EPDs.



JF Back In Black 406B, Sire

LOT  
55

## Gonsior Gracelyn G6

Dbl. Black Dbl. Polled 3/4 SM 1/94 AN Female

CE	BW	WW	YW	ADG	MCE	MM	MWW	STAY	DOC	CW	YG	MARB	BF	REA	API	TI
13	.1	68	101	.20	7	24	58	15	12.7	43.7	-.20	.17	-.055	.64	123	70

#3671035  
Tattoo: G6  
BD: 2-12-19  
Act. BW: 65  
Adj. WW: 607

CCR Payday 0320C

Gonsior Donna D28

Basin Payweight 1682

CCR Ms. 4045 Time 7322T

FSCI Indys Upgrade

ANDJ Miss Sweet

CCR Payday made a broody tank here. She's got brood cow written all over her. From the Magnetic Lady cow family, her dam is a powerful milker.



CCR Payday 0320C, Sire







CCR Cowboy  
Cut 5048Z,  
Sire

LOT  
56

## Gonsior Giddyup G18

Dbl. Black Dbl. Polled Purebred Female

CE	BW	WW	YW	ADG	MCE	MM	MWW	STAY	DOC	CW	YG	MARB	BF	REA	API	TI
13	.4	71	97	.16	8	26	61	20	8.6	31.2	-.46	.09	-.103	.95	139	74

#3671030  
Tattoo: G18  
BD: 2-18-19  
Act. BW: 71  
Adj. WW: 652

CCR Cowboy Cut 5048Z

Gonsior Cora C38

Triple C Singletary S3H  
CCR Ms. 4045 Time 7322T  
HILB Direct Deposit  
Gonsior Meg M11

Tank of a female...just like her mother. Traces back to a Gary Meyer donor. So easy fleshing; a herd of Cowboy Cut females like this would sure be the deal.

LOT  
57

## Gonsior Genevieve G17

Dbl. Black Dbl. Polled 5/8 SM 3/8 AN Female

CE	BW	WW	YW	ADG	MCE	MM	MWW	STAY	DOC	CW	YG	MARB	BF	REA	API	TI
9	2.9	78	119	.25	5	20	59	17	8.0	37.4	-.18	.27	-.034	.66	127	74

#3670931  
Tattoo: G17  
BD: 2-17-19  
Act. BW: 93  
Adj. WW: 640

Elm-Mound/GS LD D340

Gonsior Wheel O Glitter

W/C Lock Down 206Z  
HILB/SHER Lookin Hot  
FBFS Wheel Man 649W  
HHSF Hilda 2W97

Glitter cow family here, with Wheel Man and Lockdown U mixed in. Ratio of 112 at weaning, with big growth numbers. This one will have admirers.



Elm-Mound/GS LD D340, Sire



W/C Lock Down 206Z, Grandsire



LOT  
58

## Gonsior Gietta G13

Dbl Black Dbl. Polled 1/2 SM 1/2 AN Baldy Female

CE	BW	WW	YW	ADG	MCE	MM	MWW	STAY	DOC	CW	YG	MARB	BF	REA	API	TI
12	.6	67	104	.23	7	24	58	17	7.5	34.0	-.13	.37	-.024	.55	136	73

#3671006  
Tattoo: G13  
BD: 2-15-19  
Act. BW: 81  
Adj. WW: 588

Elm-Mound/GS LD D340

HHSF Hilda 2W97

W/C Lock Down 206Z  
HILB/SHER Lookin Hot  
Mytty In Focus  
HHSF Black Matilda

Another female from the Glitter line. G13 is a full baldy 1/2 blood. She's super feminine, with great numbers.





SVF Steel Force S701, Sire



SS Babys Breath P035, Grandam

## LOT 59 **Gonsior Steelbreath G29**

**Dbl. Black Dbl. Polled Purebred Female**

CE	BW	WW	YW	ADG	MCE	MM	MWW	STAY	DOC	CW	YG	MARB	BF	REA	API	TI
12	1.2	67	94	.17	5	18	51	12	9.3	18.7	-.57	-.15	-.126	.94	108	65

#3670928  
Tattoo: G29  
BD: 2-24-19  
Act. BW: 78  
Adj. WW: 605

SVF Steel Force S701  
HS/TBSF Breathless 8Y

CNS Dream On L186  
SVF Sheza Beauty L901  
Mr. NLC Upgrade U8676  
SS Babys Breath P035

One of our favorite Simmental donors was the great Baby's Breath. We have an Upgrade daughter, Breathless 8Y, who is super too. This one was intended to be a replacement for us, but she's in the sale pen. She's special. Don't miss this fancy Steel Force.



## LOT 60 **Gonsior Gia G20**

**Dbl. Black Dbl. Polled Purebred Baldy Female**

CE	BW	WW	YW	ADG	MCE	MM	MWW	STAY	DOC	CW	YG	MARB	BF	REA	API	TI
9	3.1	68	100	.20	3	23	57	18	13.0	28.3	-.54	-.03	-.118	1.00	120	67

#3670944  
Tattoo: G20  
BD: 2-20-19  
Act. BW: 89  
Adj. WW: 500

Kappes Mile High B11  
Rains Cammo D81

Remington Lock N Load 54U  
Miss Werning KP 8543U  
CCR Cowboy Cut 5048Z  
Gonsior Yikes Y10

Zipper fronted, fancy baldy. Milo daughters are making good cows, and this one should be no exception.

## LOT 61 **Gonsior Geneva G19**

**Dbl. Black Dbl. Polled 3/4 SM 1/4 AN Baldy Female**

CE	BW	WW	YW	ADG	MCE	MM	MWW	STAY	DOC	CW	YG	MARB	BF	REA	API	TI
13	-.6	60	88	.18	6	21	51	15	9.3	26.7	-.29	-.15	-.067	.60	119	65

#3670930  
Tattoo: G19  
BD: 2-19-19  
Act. BW: 69  
Adj. WW: 515

Elm-Mound/GS LD D340  
W/C Lock Down 206Z  
HILB/SHER Lookin Hot  
Gonsior Doubledeal D106  
WLE Big Deal A617  
Gonsior Yikes Y10

Lockdown U daughter, he's one of the most impressive sires to ever run our pastures...right up with Milo and Apache. Long necked and feminine, she's a granddaughter of Cory Rain's Yikes donor cow.







WRS/GS  
Dixie Z201,  
Dam



Independence,  
Grandam

LOT  
62

## Gonsior/GC Gracieanne G33

Dbl. Black Dbl. Polled 5/8 SM 3/8 AN Female

CE	BW	WW	YW	ADG	MCE	MM	MWW	STAY	DOC	CW	YG	MARB	BF	REA	API	TI
9	1.0	68	108	.25	3	27	61	12	8.5	27.2	-.28	.12	-.048	.74	110	68

#3671036  
Tattoo: G33  
BD: 3-1-19  
Act. BW: 90  
Adj. WW: 584

W/C Executive Order 8543B

WRS/GS Dixie Z201

W/C United 956Y

Miss Werning KP 8543U

S A V Pioneer 7301

KA TCF Independence S30L

Z201 is one of our favorite donors. This Executive Order daughter has all the parts to be special also. From the great Independence/Hollywood Queen cow family, she's the right kind. Offered with Gulbrandson.

LOT  
63

## Gonsior Effective G30

Dbl. Black Dbl. Polled 3/4 SM 1/4 AN Female

CE	BW	WW	YW	ADG	MCE	MM	MWW	STAY	DOC	CW	YG	MARB	BF	REA	API	TI
12	.3	64	93	.18	5	22	54	17	11.9	26.1	-.52	.02	-.109	.99	127	69

#3670939  
Tattoo: G30  
BD: 2-26-19  
Act. BW: 73  
Adj. WW: 567

Kappes Mile High B11

Gonsior Ellen E310

Remington Lock N Load 54U

Miss Werning KP 8543U

Gonsior Chances R B80

KSR 103W

Pedigree, numbers and the look. Grandam, 103W, has been a super cow here; her daughter produced the Gizmo herd bull for Vanderholms. Give G30 a look.



LOT  
64

## Gonsior Gemma G32

Dbl. Black Dbl. Polled 1/2 SM 1/2 AN Female

CE	BW	WW	YW	ADG	MCE	MM	MWW	STAY	DOC	CW	YG	MARB	BF	REA	API	TI
9	1.9	72	107	.22	5	22	58	16	14.5	42.9	-.19	.34	-.025	.53	127	73

#3671002  
Tattoo: G32  
BD: 2-27-19  
Act. BW: 71  
Adj. WW: 575

CCR Payday 0320C

Gonsior Sheza Chance E12

Basin Payweight 1682

CCR Ms. 4045 Time 7322T

Gonsior Chances R B80

Gonsior Newslady U204

Another Payday that should be a super cow. Growth is bred in with the great Newslady daughter, U204, on the bottom side here.





Halls Be Steel  
My Heart,  
Dam



Mr. HOC  
Broker, Full  
Brother to  
Dam

**LOT 65** **Gonsior Gloria H25 G60**  
Dbl. Black Dbl. Polled Purebred Female

CE	BW	WW	YW	ADG	MCE	MM	MWW	STAY	DOC	CW	YG	MARB	BF	REA	API	TI
10	2.7	67	103	.22	5	19	53	15	8.2	24.8	-.45	-.20	-.101	.81	105	62

#3671034  
Tattoo: G60  
BD: 3-6-19  
Act. BW: 95 ET  
Adj. WW: 677

HC Power Drive 88H  
Halls Be Steel My Heart

WLE Power Stroke  
Kappes Lady Irish F88  
SVF Steel Force S701  
JM BF H25

We are kind of proud of this one of a kind mating...G60 is a Power Drive out of a full sister to Broker. Interesting? Gloria H25 has cow power bred in. Think of the possibilities. Many will argue that Power Drives were some of the best females the breed has seen. This one is unique.



**LOT 66** **Gonsior/SCC Miley G35**  
Dbl. Black Dbl. Polled 1/2 SM 1/2 AN Female

CE	BW	WW	YW	ADG	MCE	MM	MWW	STAY	DOC	CW	YG	MARB	BF	REA	API	TI
15	.1	60	93	.21	7	22	52	17	11.2	20.9	-.14	.39	-.022	.42	139	71

#3671025  
Tattoo: G35  
BD: 3-4-19  
Act. BW: 78  
Adj. WW: 521

JF Milestone 999W  
AR Ideal 345 854E 807

TNT Top Gun R244  
Ms. Maxie Lou M112S  
O C C Emblazon 854E  
A R 345 Ideal 761C EXT

Natural calf from the 807 donor. The Milestone's are making great cows across the country. Super sharp and eye appealing. This one will be something as a bred.

AR Ideal 345 854E 807, Dam Lot 66



**LOT 67** **Gonsior Geena G36**  
Dbl. Black Dbl. Polled 3/4 SM 1/4 AN Female

CE	BW	WW	YW	ADG	MCE	MM	MWW	STAY	DOC	CW	YG	MARB	BF	REA	API	TI
12	-.4	64	95	.19	6	23	55	14	12.9	27.3	-.28	.10	-.061	.62	115	66

#3671000  
Tattoo: G36  
BD: 3-4-19  
Act. BW: 74  
Adj. WW: 549

Gons/TBSF Executive PWR  
Gonsior Champagne C6  
W/C Executive Order 8543B  
TBSF Zelda 704Z  
S A V Priority 7283  
Gonsior Blazing Y208

Pretty nifty Executive Power female out of C6. Joy, Blazey and 8543U families wrapped into one nice heifer.





LOT  
68**Gonsior Guinevere G39**

Dbl. Black Dbl. Polled Purebred Female

CE	BW	WW	YW	ADG	MCE	MM	MWW	STAY	DOC	CW	YG	MARB	BF	REA	API	TI
11	2.2	75	112	.23	4	25	63	17	12.2	33.0	-.54	.00	-.112	1.13	126	73

#3671013  
Tattoo: G39  
BD: 3-13-19  
Act. BW: 83  
Adj. WW: 619

Kappes Mile High B11

Gonsior Crystal C39

Remington Lock N Load 54U  
Miss Werning KP 8543U  
Mr. NLC Upgrade U8676  
Gonsior Lanass 806 Blaze

If I was putting odds on the future success of any cow prospect to sell today...this one might get my vote. C39, from the Meyer Ranch 400/806A cow family, just never misses. They always look smokin' good, milk well, have great attitudes and raise them well.

LOT  
69**Gonsior Gwenyth G40**

Dbl. Black Dbl. Polled 3/4 SM 1/4 AN Female

CE	BW	WW	YW	ADG	MCE	MM	MWW	STAY	DOC	CW	YG	MARB	BF	REA	API	TI
13	-.2	64	94	.19	6	20	52	16	10.7	22.7	-.44	.04	-.086	.86	118	66

#3670984  
Tattoo: G40  
BD: 3-13-19  
Act. BW: 69  
Adj. WW: 578

Kappes Mile High B11

HILB/SHER Style N Beauty

Remington Lock N Load 54U  
Miss Werning KP 8543U  
Silveiras Style 9303  
HS/HSF Beautiful Dream

A Beautiful Dream granddaughter here, with Silveiras Style blended in. She's a Milo also! Great pedigrees never go out of style.

HS/HSF Beautiful  
Dream, Grandam  
Lot 69

LOT  
70**Gonsior Gabran G106**

Dbl. Black Dbl. Polled 3/4 SM 1/4 AN Female

CE	BW	WW	YW	ADG	MCE	MM	MWW	STAY	DOC	CW	YG	MARB	BF	REA	API	TI
15	-1.0	61	87	.16	8	25	55	18	7.3	31.6	-.27	.17	-.071	.57	129	67

#3670929  
Tattoo: G106  
BD: 4-10-19  
Act. BW: 73  
Adj. WW: 570

Elm-Mound/GS LD D340

Gonsior/MML Winni W406

W/C Lock Down 206Z  
HILB/SHER Lookin Hot  
SVF/NJC Built Right N48  
Gonsior Lanass Rolanda

Fancy April Lockdown U. We anticipate these to be great cows with their EPDs and look...give one a try.



All heifers are enrolled in ASA THE program and you register their first calf free. All have had 2 doses of Scourguard, have been recently poured and wormed, and all have had magnets.



Miss Werning KP  
8543U, Grandam



W/C Executive Order  
8543B, Sire



LOT 71

## Elm-Mound EX Order F360

Dbl. Black Homo. Polled Purebred Female

CE	BW	WW	YW	ADG	MCE	MM	MWW	STAY	DOC	CW	YG	MARB	BF	REA	API	TI
12	1.6	83	127	.28	4	26	68	14	15.1	35.7	-.50	.06	-.101	1.11	129	80

Pasture Sire: Elm-Mound PremBeef E338

Dates: 6-30 to 7-14-19 • Due: 4-21-20

Est. Plan Mating EPDs: 13 .5 70 109 .25 5 27 62 16 9.6

Carcass: 28.4 -.44 .18 -.09 .90 137 77

#3448297

Tattoo: F360

BD: 2-4-18

Adj. BW: 95

Adj. WW: 758

W/C Executive Order 8543B

Elm-Mound Upgrade B213

W/C United 956Y

Miss Werning KP 8543U

Mr. NLC Upgrade U8676

VBCC Leather M312

F360 is a stylish Executive Order daughter with extra growth and performance. She ranks in the top 5% for both weaning and yearling weight EPDs. Her Upgrade dam has been a consistent producer weaning heavy calves with eye appeal each year. F360 is due in April to my outcross herd sire, E338, he's sired by Premium Beef and out of the T60 donor from Oak Meadow Farms and Diamond K Genetics.

Consigned by Elm-Mound Farms.

LOT 72

## Gonsior Fabulous F1

Dbl. Black Dbl. Polled 3/4 SM 1/4 AN Female

CE	BW	WW	YW	ADG	MCE	MM	MWW	STAY	DOC	CW	YG	MARB	BF	REA	API	TI
12	.2	59	85	.16	4	24	54	17	11.5	21.5	-.46	.18	-.085	.92	123	66

#3525142

Tattoo: F1

BD: 1-28-18

Act. BW: 73

Adj. WW: 591

Kappes Mile High B11

Gonsior J-Catcher Z53

Remington Lock N Load 54U

Miss Werning KP 8543U

WAGR Dream Catcher 03R

O C C Juanada 673N

A.I. Sire: CCR Boulder 1339A Date: 6-4-19 • Due: 3-14-20

Est. Plan Mating EPDs: 14 -.75 63 95 .20 6 23 55 17 13.85

Carcass: 25.15 -.45 .42 -.08 1.00 141 75

Pasture Sire: Gons/TBSF Executive PWR Dates: 6-10 to 8-20-19

Good looking Milo daughter out of one of our favorites...a striking baldy Dream Catcher. From the OCC Juanada cow family, F1's mating to CCR Boulder should be fabulous.



CCR Boulder  
1339A, AI Sire



LOT 73

## Gonsior Felon F8

Dbl. Black Dbl. Polled 1/2 SM 1/2 AN Female

CE	BW	WW	YW	ADG	MCE	MM	MWW	STAY	DOC	CW	YG	MARB	BF	REA	API	TI
15	-1.7	58	92	.22	7	26	55	15	13.5	21.6	-.25	.32	-.041	.64	135	71

#3525115

Tattoo: F8

BD: 2-8-18

Act. BW: 74

Adj. WW: 559

Connealy Comrade 1385

Gonsior Durango D17

Connealy Consensus 7229

Happy Gee Of Conanga 919

Kappes Mile High B11

Gonsior Smooth Built S35

Feminine, big numbered SimAngus™ 1/2 blood. High API and TI. The Comrades are making great cows. This mating to Hook's Beacon will yield phenomenal calving ease numbers. Notice the 155 API on calf!

Black Dbl. Polled Purebred Female

BD: 2-19-20 Act BW: 68

Sire: Hooks Beacon 56B

Est. EPDs: 16 -2.15 68 105 .24 10 23 57 18 13.0

Carcass: 29.75 -.39 .48 -.04 1.16 155 81



Hooks Beacon 56B, AI Sire





SC Pay The Price  
C11, Sire

LOT  
74

## Gonsior Fabian F20

Dbl. Black Dbl. Polled Purebred Female

CE	BW	WW	YW	ADG	MCE	MM	MWW	STAY	DOC	CW	YG	MARB	BF	REA	API	TI
12	.7	57	84	.17	6	21	49	14	11.0	25.3	-.53	.02	-.113	.98	118	64

Here's a fancy Pay The Price purebred. Dam, D12, is a good young cow. The mating to the Hillstone Capstone is interesting...should yield a desirable 1/2 blood.

#3525098  
Tattoo: F20  
BD: 2-23-18  
Act. BW: 75  
Adj. WW: 576

SC Pay The Price C11

Gonsior Directive D12

CNS Pays To Dream T759  
LLSF Ura Baby Doll U194  
Kappes Mile High B11  
KSR 103W

A.I. Sire: Hilltop Capstone 5374 Date: 5-22-19 • Due: 3-1-20  
Est. Plan Mating EPDs: 17 -.7 70121 .32 7 29 63 15 11.6  
Carcass: 55.6 .03 .47 .03 .74 125 68  
Pasture Sire: Gonsior He'z Classy F90 Dates: 7-10 to 8-20-19



LOT  
75

## Gonsior Felonious F6

Dbl. Black Dbl. Polled 3/4 SM 1/4 AN Female

CE	BW	WW	YW	ADG	MCE	MM	MWW	STAY	DOC	CW	YG	MARB	BF	REA	API	TI
15	-1.7	63	94	.19	9	23	55	17	12.9	22.9	-.34	.21	-.071	.69	134	71

#3525136  
Tattoo: F6  
BD: 2-8-18  
Act. BW: 60  
Adj. WW: 575

Vanderholm Gizmo 612D

Gonsior Daphne D49

W/C Lock Down 206Z  
Gonsior Right Answer B12  
HS/TBSF Upgrade 12Y  
Gonsior Amy Renee A20

A.I. Sire: Bridle Bit Rembrandt 630D Date: 5-24-19  
Pasture Sire: Gons/TBSF Executive PWR Dates: 6-15 to 8-20-19  
Est. Plan Mating EPDs: 17 -3.0 57 88 .19 9 22 51 18 12.6  
Carcass: 22.05 -.24 .45 -.04 .62 .62 150 75

Moderate framed, good looking Gizmo daughter with balanced EPDs across the board. Ratio'd 118 at birth and still weaned well at 575.



LOT  
76

## Elm-Mound Kayne F361

Black Dbl. Polled Purebred Female

CE	BW	WW	YW	ADG	MCE	MM	MWW	STAY	DOC	CW	YG	MARB	BF	REA	API	TI
12	-.3	54	78	.15	5	22	49	16	5.6	15.8	-.45	-.03	-.116	.59	119	62

#3448315  
Tattoo: F361  
BD: 2-17-18  
Adj. BW: 72 Twin  
Adj. WW: 662

Elm-Mound IDT Kayne A1

AJE/HS/MB Sent From Above

HTP SVF In Dew Time  
NJC SVF Antoinette K205  
Flying B Cut Above  
JF Ebony's Joy 479P

F361 is a moderate framed female out of one of my favorite cows. Maternally, her pedigree is full of high profile cows, the Hope donor from Hilbrands Cattle Co. and the Iconic Ebony's Joy L123. A maternal sister was purchased in a past Jewels Of The Northland sale by Greg Morrissey, OK, and produced a high selling show heifer for him. F361 calved in mid-January with a fancy, solid red Executive Order heifer calf. Consigned by Elm-Mound Farms.

LOT  
76A

Red Dbl. Polled Purebred Female

BD: 1-17-20 Act BW: 63  
Sire: W/C Executive Order 8543B  
Est. EPDs: 13 -1.3 66 99 .21 5 25 58 12 8.25  
Carcass: 22.95 .43 .05 -.10 .78 125 73





## LOT 77 Elm-Mound Widerange F362

Homo. Black Homo. Polled Purebred Female

CE	BW	WW	YW	ADG	MCE	MM	MWW	STAY	DOC	CW	YG	MARB	BF	REA	API	TI
11	1.0	75	115	.25	5	14	51	16	10.3	36.1	-.48	.04	-.088	1.15	128	74

F362 is a homozygous black, homozygous polled Wide Range daughter that traces back to the Ebony's Joy L123 donor on the bottom of her pedigree. She is deep bodied and feminine. F362 is due in February with an ultrasound heifer calf by Charmer. The Charmer bull is an Executive Order son out of the Fairy Tale donor, his full sisters have been sale features, bringing up to \$40,000 in previous Jewels Of The Northland sales.

Consigned by Elm-Mound Farms.

#3448310  
Tattoo: F362  
BD: 2-19-18  
Adj. BW: 79  
Adj. WW: 608

CCR Wide Range 9005A  
Elm-Mound Upgrade B204

S D S Graduate 006X  
CCR Ms. Apple 9332W  
Mr. NLC Upgrade U8676  
Elm-Mound Lucky Ace X133



HILB Hes A Charmer  
F201B, Calf Sire

LOT 77A Dbl. Black Dbl. Polled Purebred Female  
BD: 2-16-20 Act BW: 78  
Sire: HILB Hes A Charmer F201B  
Est. EPDs: 12 .05 72 110 .24 5 20 56 13 10.0  
Carcass: 32.4 -.48 -.02 -.10 1.03 120 73

## LOT 78 Gonsior Francoise F22

Dbl. Black Dbl. Polled 1/2 SM 1/2 AN Female

CE	BW	WW	YW	ADG	MCE	MM	MWW	STAY	DOC	CW	YG	MARB	BF	REA	API	TI
15	-1.2	64	104	.25	7	25	57	15	13.6	24.3	-.29	.33	-.044	.76	138	74

#3525106  
Tattoo: F22  
BD: 2-27-18  
Act. BW: 75  
Adj. WW: 610

Connealy Comrade 1385  
Gonsior Dictation D21  
Connealy Consensus 7229  
Happy Gee Of Conanga 919  
Kappes Mile High B11  
Gonsior Shalamar S4

This Comrade SimAngus™ female offers one of the most impressive set of numbers in the offering. Now add in that she's bred to the popular W/C Bankroll. She's sure to make many shortlists.

LOT 78A Black Dbl. Polled Purebred Female  
BD: 2-13-20 Act BW: 76  
Sire: W/C Bankroll 811D  
Est. EPDs: 15 -.3 68 101 .21 7 24 57 18 12.8  
Carcass: 30.9 -.40 .21 -.08 .92 133 72



W/C Bankroll 811D,  
Calf Sire



## LOT 79 Gonsior Frieda F30

Dbl. Black Dbl. Polled 3/4 SM 1/4 AN Female

CE	BW	WW	YW	ADG	MCE	MM	MWW	STAY	DOC	CW	YG	MARB	BF	REA	API	TI
11	.4	65	97	.20	6	30	63	19	12.6	32.3	-.46	.07	-.096	.99	122	67

#3525155  
Tattoo: F30  
BD: 3-12-18  
Act. BW: 78  
Adj. WW: 631

Kappes Mile High B11  
Gonsior Newslady U204  
Remington Lock N Load 54U  
Miss Werning KP 8543U  
Lemmon Newsline C804  
Brant N3192

A.I. Sire: WS Beef Maker R13 Date: 5-12-19 • Due: 2-19-20  
Est. Plan Mating EPDs: 12 .7 72 106 .21 6 29 65 19 12.95  
Carcass: 35.3 -.53 .25 -.11 1.15 146 80  
Pasture Sire: Gons/TBSF Executive PWR Dates: 7-5 to 8-20-19

Bred in growth with this high performing Milo daughter. With her high likelihood of being homozygous black, her baby should be a black Beef Maker with super numbers. Dam, U204, raises heavyweights each year.



WS Beef Maker  
R13, AI Sire







**RS&T T18**  
**Uprising A144, Dam**

**LOT**  
**80**

## Gonsior Frannie F25

**Dbl. Black Dbl. Polled 3/4 SM 1/4 AN Baldy Female**

CE	BW	WW	YW	ADG	MCE	MM	MWW	STAY	DOC	CW	YG	MARB	BF	REA	API	TI
13	.4	75	115	.25	7	21	59	15	11.5	44.2	-.35	.25	-.076	.94	130	77

A.I. Sire: Schiefelbein Effective 61 Date: 6-3-19 • Due: 3-13-20

Est. Plan Mating EPDs: 17 -1.75 66 105 .24 8 24 13.2

Carcass: 31.4 -.10 .58 .00 .58 148 80

Pasture Sire: Gons/TBSF Executive PWR Dates: 6-10 to 8-20-19

Schiefelbein Effective 61, AI Sire



#3525119  
Tattoo: F25  
BD: 3-5-18  
Act. BW: 76  
Adj. WW: 607

Elm-Mound/GS LD D340  
RS&T T18 Uprising A144

W/C Lock Down 206Z  
HILB/SHER Lookin Hot  
Mr. NLC Upgrade U8676  
Double R Mlss 29G T18

Frannie is an impressive Lockdown U female. Her dam was a Denver purchase that has done very well. The mating to Effective will crank up the numbers a bit more...while also giving you the chance of a super baldy baby.

**LOT**  
**81**

## Gonsior Flojo F33

**Dbl. Black Dbl. Polled 5/8 SM 5/16 AN 1/16 CS Female**

CE	BW	WW	YW	ADG	MCE	MM	MWW	STAY	DOC	CW	YG	MARB	BF	REA	API	TI
7	3.4	74	109	.22	-1	17	54	15	11.0	31.5	-.39	.05	-.101	.73	106	65

A.I. Sire: CCR Boulder 1339A Date: 5-18-19

Pasture Sire: Gonsior He'z Classy F90 Dates: 7-5 to 8-20-19

Est. Plan Mating EPDs: 8 2.8 68 99 .20 0 17 51 15 11.6

Carcass: 26.5 -.47 -.04 -.11 .86 111 65

CCR Boulder 1339A, AI Sire



#3525126  
Tattoo: F33  
BD: 3-14-18  
Act. BW: 90  
Adj. WW: 678

Gonsior Chances R B80  
JF Joliette 4119P

LLSF Uprising Z925  
O C C Juanada 673N  
WHF Desperado 212G  
WLE Joliette

Flojo is a SimAngus™ female that comes from a great producer that was still going at 14 years old. This heifer ratio'd 111 at weaning, with a 678# adj. WW. Vet called her most likely to pasture sire.

**LOT**  
**82**

## Gonsior Faye F34

**Dbl. Black Dbl. Polled 5/8 SM 3/8 AN Female**

CE	BW	WW	YW	ADG	MCE	MM	MWW	STAY	DOC	CW	YG	MARB	BF	REA	API	TI
8	3.3	64	91	.17	3	17	49	16	12.7	21.9	-.26	.24	-.054	.54	113	64

**Black Female**

BD: 2-10-20 Act BW: 78

Sire: VIN-MAR O'Reilly Factor

Est. EPDs: 11 .8 67 107 .25 6 22 56 15 12.95

Carcass: 37.5 -.04 .38 -.01 .43 125 71



VIN-MAR O'Reilly Factor, Calf Sire

#3525183  
Tattoo: F34  
BD: 3-15-18  
Act. BW: 100  
Adj. WW: 581

Gonsior Chances R B80  
Gonsior Trixter T29

LLSF Uprising Z925  
O C C Juanada 673N  
Gonsior/UF9A Pure Legend  
Gonsior Nani N10

F34 is a moderate, complete SimAngus™ female. Bred to the great O'Reilly Factor, she'll have a low percentage Simmental baby.

**LOT**  
**83**

## Gonsior Fiona F37

**Dbl. Black Homo. Polled 3/4 SM 1/4 AN Female**

CE	BW	WW	YW	ADG	MCE	MM	MWW	STAY	DOC	CW	YG	MARB	BF	REA	API	TI
14	-1.5	88	114	.14	6	18	47	10	13.2	15.1	-.39	.36	-.089	.59	125	71

A.I. Sire: W/C Night Watch 84E Date: 5-27-19 • Due: 3-6-20

Est. Plan Mating EPDs: 16 -2.1 65 88 .14 7 21 53 16 13.8

Carcass: 19.9 -.38 .33 -.08 .73 150 79

Pasture Sire: Gons/TBSF Executive PWR Dates: 5-28 to 8-20-19

W/C Night Watch 84E, AI Sire



#3525092  
Tattoo: F37  
BD: 3-17-18  
Act. BW: 62  
Adj. WW: 545

WLE Uno Mas X549  
BBarH Miss Uppity D36B

CNS Dream On L186  
Shawnee Miss 770P  
Mr. NLC Upgrade U8676  
Moffitt Norris Pride

Fiona, an easy going, good numbered Uno Mas, will be one to take a look at. Called safe to Night Watch, this should be a nice mating.



FBFS Wheel Man,  
SireLOT  
84**Gonsior Freewheelin F40**

Dbl. Black Dbl. Polled Purebred Female

CE	BW	WW	YW	ADG	MCE	MM	MWW	STAY	DOC	CW	YG	MARB	BF	REA	API	TI
11	1.5	77	118	.26	6	17	56	15	8.4	36.7	-.34	.08	-.075	.84	129	75

Pasture Sire: Gons/TBSF Executive PWR Dates: 5-28 to 8-20-19  
 Est. Plan Mating EPDs: 13 -.25 71 109 .24 6 22 58 15 10.4  
 Carcass: 30.55 -.38 .07 -.08 .81 130 75

#3525134  
 Tattoo: F40  
 BD: 3-19-18  
 Act. BW: 75  
 Adj. WW: 656

FBFS Wheel Man 649W

SVF Empriss X334

SVF Steel Force S701  
 SVF Star Struck S199  
 Mr. NLC Upgrade U8676  
 SS Empriss T091

Ratio'd 107 and 105 for BW and WW. One of the favorite breds. A phenotypic specimen, as well as good numbered with big growth. Wheel Man out of Empriss...pedigree is nice too.

LOT  
85**Gonsior Frolic F46**

Dbl. Black Dbl. Polled 5/8 SM 3/8 AN Female

CE	BW	WW	YW	ADG	MCE	MM	MWW	STAY	DOC	CW	YG	MARB	BF	REA	API	TI
13	.8	72	109	.23	6	24	60	17	9.3	36.7	-.28	.24	-.055	.78	132	74

#3525166  
 Tattoo: F46  
 BD: 4-7-18  
 Act. BW: 80  
 Adj. WW: 641

Elm-Mound/GS LD D340

JR Passing Grade B32

W/C Lock Down 206Z  
 HILB/SHER Lookin Hot  
 Mr. NLC Upgrade U8676  
 Gonsior Shezablazin S104

A.I. Sire: CLRS Dividend 405D Date: 5-15-19 • Due: 2-22-20  
 Est. Plan Mating EPDs: 12 .75 76 114 .24 5 20 58 17 11.7  
 Carcass: 35.1 -.28 .20 -.06 .72 130 74  
 Pasture Sire: Gonsior He'z Classy F90 Dates: 7-5 to 8-20-19

Another Lockdown U female with strong EPDs. Her mother is a very efficient female. Bred to Dividend, this will be a nice mating.

CLRS Dividend 405D,  
AI SireLOT  
86**Gonsior Fortify F336**

Dbl. Black Dbl. Polled 1/4 SM 3/4 AN Female

CE	BW	WW	YW	ADG	MCE	MM	MWW	STAY	DOC	CW	YG	MARB	BF	REA	API	TI
12	-.5	63	96	.21	7	27	58	14	9.6	37.5	.02	.47	.020	.47	130	73

#3525127  
 Tattoo: F336  
 BD: 3-25-18  
 Act. BW: 80  
 Adj. WW: 637

Elm-Mound/GS LD D340

MF Emma 2340

W/C Lock Down 206Z  
 HILB/SHER Lookin Hot  
 MF Net Return 8197  
 Koupal SH Emma 718

Super SimAngus™ out of Lockdown U. Bred to Uno Mas for a 3/4 Simmental calf. Make sure you take a look at this complete heifer.

LOT  
86A

Black Polled Purebred Female

BD: 2-18-20 Act BW: 80  
 Sire: WLE Uno Mas X549  
 Est. Plan Mating EPDs: 13 -.7 60 85 .16 6 22 52 12 11.65  
 Carcass: 20.05 -.23 .43 -.05 .47 127 72



WLE Uno Mas X549, AI Sire



KA TCF Independence  
S30L, GrandamGonsior/WRS Lady  
Upgrade, DamLOT  
87**Gonsior/GS Folita F49**

Dbl. Black Dbl. Polled 3/4 SM 1/4 AN Female

CE	BW	WW	YW	ADG	MCE	MM	MWW	STAY	DOC	CW	YG	MARB	BF	REA	API	TI
11	.7	75	117	.26	5	26	63	14	8.9	46.8	-.32	.22	-.067	.96	125	75

Black 1/4 SM 3/4 AN Female

BD: 2-16-20 Act BW: 71  
Sire: Schiefelbein Effective 61  
Est. EPDs: 16 -1.6 66 106 .25 7 26 59 15 11.9  
Carcass: 32.7 -.08 .56 .00 .59 146 79

#3525133  
Tattoo: F49  
BD: 4-15-18  
Act. BW: 70 ET  
Adj. WW: 646

W/C Lock Down 206Z

Gonsior/WRS Lady Upgrade

Remington Lock N Load 54U  
G C F Miss New Level R206  
Mr. NLC Upgrade U8676  
KA TCF Independence S30L

Here's a W/C Lock Down ET from the awesome A317 donor. Moderate, sound, and good looking. The Effective mating will be impressive. These EPDs will be a breeze to work with.



Lazy H Pathfinder R104, AI Sire

LOT  
88**Gonsior Fredrica F23**

Dbl. Black Dbl. Polled Purebred Female

CE	BW	WW	YW	ADG	MCE	MM	MWW	STAY	DOC	CW	YG	MARB	BF	REA	API	TI
12	.5	60	83	.14	5	17	47	10	14.0	12.0	-.40	.26	-.101	.51	122	71

#3525164  
Tattoo: F23  
BD: 3-1-18  
Act. BW: 77  
Adj. WW: 539

WLE Uno Mas X549

WF Totaled D3

CNS Dream On L186  
Shawnee Miss 770P  
SS/PRS Tail Gater 621Z  
VBCC Molly M10

A.I. Sire: Lazy H Pathfinder R104 Date: 5-8-19 • Due: 2-15-20  
Est. Plan Mating EPDs: 13 .55 56 78 .14 5 18 46 11 9.0  
Carcass: 19.9 -.47 .03 -.12 .69 113 63  
Pasture Sire: Gonsior He'z Classy F90 Dates: 6-24 to 8-20-19

F23 is an Uno Mas out of a cow from White's in Oklahoma. She's bred for a baldy baby by Pathfinder. A good looking female.

LOT  
89**Gonsior Florista F102**

Hetero Black Dbl. Polled Purebred Female

CE	BW	WW	YW	ADG	MCE	MM	MWW	STAY	DOC	CW	YG	MARB	BF	REA	API	TI
9	3.0	72	108	.22	5	18	55	16	11.7	33.3	-.48	-.04	-.112	.94	116	68

A.I. Sire: Schiefelbein Effective 61 Date: 5-20-19 • Due: 2-27-20  
Est. Plan Mating EPDs: 15 -.45 65 101 .23 7 23 55 16 13.3  
Carcass: 25.95 -.16 .43 -.02 .58 141 75  
Pasture Sire: Gonsior He'z Classy F90 Dates: 7-5 to 8-20-19

Schiefelbein Effective 61, AI Sire

#3525168  
Tattoo: F102  
BD: 4-18-18  
Act. BW: 90  
Adj. WW: 651

Kappes Mile High B11

Gonsior Alicia A31

Remington Lock N Load 54U  
Miss Werning KP 8543U  
BCLR Ammo W513-1  
Gonsior/JC M2842



Florista is a growthy Mile High that ratio'd 107 with a 651 adj. ww. Her dam is a big, powerful red female, that weans them heavy. We really like Effective as a calving ease sire that grows.

LOT  
90**Gonsior Fantastic F44**

Dbl. Black Dbl. Polled 1/2 SM 1/2 AN Baldy Female

CE	BW	WW	YW	ADG	MCE	MM	MWW	STAY	DOC	CW	YG	MARB	BF	REA	API	TI
16	-2.2	61	90	.18	5	20	50	16	9.9	27.8	-.14	.30	-.022	.50	138	72

Black Brockle Dbl. Polled 1/4 SM 3/4 AN Female  
BD: 2-7-20 Act BW: 68  
Sire: Schiefelbein Effective 61  
Est. EPDs: 18 -3.05 59 92 .21 7 23 53 16 12.4  
Carcass: 23.2 .01 .60 .03 .36 152 77

#3525137  
Tattoo: F44  
BD: 3-27-18  
Act. BW: 65  
Adj. WW: 596

Elm-Mound/GS LD D340

Miss JR OC Dream T5

W/C Lock Down 206Z  
HILB/SHER Lookin Hot  
O C C Legend 616L  
Gonsior Applause P43

Pretty baldy SimAngus™ female with pedigree appeal as well. She's a granddaughter of the old Applause donor with OCC Legend as her maternal grandsire. Lockdown U helped her to a great set of EPDs. This mating to Effective will crank the numbers even more.



W/C Night Watch 84E,  
AI Sire

B C Lookout 7024, Sire

LOT  
91**Gonsior Shez Perfecto E305**

Dbl. Black Dbl. Polled 1/2 SM 1/2 AN Female

CE	BW	WW	YW	ADG	MCE	MM	MWW	STAY	DOC	CW	YG	MARB	BF	REA	API	TI
12	1.5	62	90	.17	4	17	48	15	10.8	14.8	-.21	.28	-.032	.48	123	67

A.I. Sire: W/C Night Watch 84E Date: 5-24-19 • Due: 3-3-20  
 Est. Plan Mating EPDs: 15 -.6 67 92 .16 6 20 53 18 12.6  
 Carcass: 19.75 -.29 .29 -.05 .68 138 73  
 Pasture Sire: Gonsior He'z Classy F90 Dates: 7-10 to 8-20-19

#3468595  
 Tattoo: E305  
 BD: 10-2-17  
 Act. BW: 72 ET  
 Adj. WW: 585

B C Lookout 7024  
 CNS Perfection S603

O C C Legend 616L  
 Gibbet Hill Mignonne E37  
 CNS Dream On L186  
 SS Miss Break

With an exciting mating to Night Watch, this SimAngus™ ET will be a popular choice.  
 From the great BC Lookout by Perfection S603 flush. Don't miss her.

LOT  
92**GS Shaylee F622**

Red Dbl. Polled Purebred Female

CE	BW	WW	YW	ADG	MCE	MM	MWW	STAY	DOC	CW	YG	MARB	BF	REA	API	TI
10	1.0	75	106	.20	6	19	57	14	8.7	16.7	-.42	.24	-.091	.70	133	79

#Pending  
 Tattoo: F622  
 BD: 2-5-18  
 Act. BW: 90  
 Adj. WW: 633

CDI Rimrock 325Z

LEFS Ms Last Call 622-1D

WS Beef King W107

CDI Ms Top Gun 5U

W/C Last Call 206A

Brant Just A Moment A11T

A.I. Sire: LD Capitalist 316 Date: 5-27-19 • Due: 3-6-20  
 Est. Plan Mating EPDs: 14 -.7 77 116 .25 10 22 61 13 10.7  
 Carcass: 34.0 -.11 .49 -.01 .60 141 83  
 Pasture Sire: Gons/TBSF Executive PWR Dates: 5-28 to 8-20-19

LD Capitalist 316,  
AI Sire

A red CDI Rimrock purebred that has a cowy look.  
 The LD Capitalist mating should yield an awesome  
 1/2 blood SimAngus™.

LOT  
93**Elm-Mound UC E299**

Black Dbl. Polled Purebred Female

CE	BW	WW	YW	ADG	MCE	MM	MWW	STAY	DOC	CW	YG	MARB	BF	REA	API	TI
10	1.9	60	86	.16	3	22	52	16	10.1	25.8	-.56	.03	-.124	.98	118	65

#3408946  
 Tattoo: E299  
 BD: 9-4-17  
 Adj. BW: N/A  
 Adj. WW: 669

Elm-Mound/GS Up Cls C122

Elm-Mound OA C242

Sandeem Upper Class 2386

HSF Victoria P30

AJE/HS/MC Over Above

HS Pretty Girl L475

Pasture Sire: HILB Hes A Charmer F201B  
 Dates: 5-11 to 6-30-19 • Obs.: 5-12-19 • Due: 2-21-20 • Heifer  
 Est. Plan Mating EPDs: 11 .5 65 96 .20 4 24 56 13 9.9  
 Carcass: 27.25 -.52 -.03 -.11 .94 115 68

E299 is a stout, deep ribbed fall born heifer that was held over for spring calving  
 as I discontinue my fall calving program. Her grandam was a farm favorite and was  
 17 years old when she left the herd. E299 is due to calve in late February with an  
 ultrasound heifer calf by Charmer, the top selling herd sire prospect from the 2019  
 Hiibrands Cattle Company's Passion For Perfection Sale. Consigned by Elm-Mound Farms.



HILB Hes A Charmer F201B, Pasture Sire







AR Ideal 345 854E  
807, Dam of Lot  
94 & 95

LOT  
94

## Gonsior Remember When E303

Dbl. Black Dbl. Polled 1/2 SM 1/2 AN Baldy Female

CE	BW	WW	YW	ADG	MCE	MM	MWW	STAY	DOC	CW	YG	MARB	BF	REA	API	TI
18	-1.7	49	72	.15	7	16	40	13	8.3	14.3	-.18	.24	-.011	.56	126	62

A.I. Sire: W/C Night Watch 84E Date: 5-30-19 • Due: 3-9-20  
Est. Plan Mating EPDs: 18 -2.2 60 83 .15 8 19 49 17 11.35  
Carcass: 19.5 -.28 .27 -.04 .72 139 70  
Pasture Sire: Gonsior He'z Classy F90 Dates: 6-10 to 8-20-19

#3468607  
Tattoo: E303  
BD: 9-11-17  
Act. BW: 78 ET  
Adj. WW: 580

SVF Steel Force S701  
AR Ideal 345 854E 807

CNS Dream On L186  
SVF Sheza Beauty L901  
O C C Emblazon 854E  
A R 345 Ideal 761C EXT

Wow. A Steel Force out of our great 807 Angus donor. She's a belly-dragger 1/2 blood. Vet called her safe to the pasture sire...we should know by sale day if she could possibly have the AI calf to Night Watch. A front pasture kind of female.



LOT  
95

## Gonsior Ideal 807 Noted F812

Dbl. Black Dbl. Polled Purebred Angus Female

CED	BW	WW	YW	CEM	Milk	CW	MARB	RE	Fat
+9	+.7	+49	+83	+9	+15	+19	+.47	+.41	+.034

#19458731  
Tattoo: F812  
BD: 3-7-18  
Act. BW: 74 ET  
Adj. WW: 545

Brooking Bank Note 4040  
AR Ideal 345 854E 807

Connealy Earnan 076E  
E A Rose 918  
O C C Emblazon 854E  
A R 345 Ideal 761C EXT

Pasture Sire: Gons/TBSF Executive PWR Dates: 5-28 to 8-20-19

F812 is a moderate, good looking purebred Angus. She is sired by the Canadian sensation Brooking Bank Note and out of our awesome 807 Angus donor that came from Advantage Angus. She is bred to the pasture sire for a SimAngus™ calf.

LOT  
96

## EX1H

Black Dbl. Polled Commercial SimAngus™ Female

Tattoo: EX1H  
BD: 8-10-17  
Act. BW: 80  
Act. WW: 600

Connealy Comrade 1385  
BX1H  
Connealy Consensus 7229  
Happy Gee Of Conanga 919

A.I. Sire: S A V Thunderbird Date: 6-9-19 • Due: 3-19-20  
Pasture Sire: Gons/TBSF Executive PWR Dates: 6-10 to 8-20-19

Big, stout commercial female. Could be a great recip. Called safe to Thunderbird, she will be a great producer on her own.





LOT  
97**RDP Brenda B4**

Black Polled 1/2 SM 1/2 AN Female

CE	BW	WW	YW	ADG	MCE	MM	MWW	STAY	DOC	CW	YG	MARB	BF	REA	API	TI
8	2.4	63	92	.19	2	20	51	14	8.2	32.6	-.09	.27	-.15	.49	112	65

#3683010  
Tattoo: B4  
BD: 2-20-14  
Act. BW: 84 ET  
Adj. WW: N/A

Pedigree for Lots 97, 98 &amp; 99:

Duff New Edition 6108    OCC Genesis 872G  
OCC Dixie Erica 814G  
ESN4    ES Kilowat KH19  
ESL69

LOT  
97A

Black Dbl. Polled 3/4 SM 1/4 AN Female

BD: 1-24-20 Act BW: 80  
Sire: CCR Cowboy Cut 5048Z  
Est. EPDs: 10 2.5 78 110 .21 5 22 61 18 13.10  
Carcass: 39.7 -.25 .34 -.05 .81 132 76

LOT  
98**RDP Barbie B9**

Black Polled 1/2 SM 1/2 AN Female

CE	BW	WW	YW	ADG	MCE	MM	MWW	STAY	DOC	CW	YG	MARB	BF	REA	API	TI
8	2.4	63	92	.18	2	20	51	14	8.2	32.6	-.09	.27	-.15	.49	112	65

#3683012  
Tattoo: B9  
BD: 3-22-14  
Act. BW: 84 ET  
Adj. WW: N/A

LOT  
98A

Black Dbl. Polled 3/4 SM 1/4 AN Female

BD: 1-24-20 Act BW: 83  
Sire: CDI Authority 77X  
Est. EPDs: 7 3.2 71 107 .23 1 19 55 16 10.80  
Carcass: 35.95 -.27 .08 -.05 .81 107 64

LOT  
99**RDP Bambi B31**

Black Polled 1/2 SM 1/2 AN Female

CE	BW	WW	YW	ADG	MCE	MM	MWW	STAY	DOC	CW	YG	MARB	BF	REA	API	TI
8	2.4	63	92	.18	2	20	51	14	8.2	32.6	-.09	.27	-.15	.49	112	65

#3683014  
Tattoo: B9  
BD: 3-25-14  
Act. BW: 84 ET  
Adj. WW: N/A

LOT  
99A

Black Dbl. Polled 3/4 SM 1/4 AN Female

BD: 1-20-20 Act BW: 81  
Sire: CCR Cowboy Cut 5048Z  
Est. EPDs: 10 2.5 78 110 .21 5 22 61 18 13.1  
Carcass: 39.7 -.25 .34 -.05 .81 132 76

LOT  
100**RDP Boo B70**

Black Polled Purebred Blaze Female

CE	BW	WW	YW	ADG	MCE	MM	MWW	STAY	DOC	CW	YG	MARB	BF	REA	API	TI
12	1	63	91	*	7	26	58	15	*	21.5	-.4	.08	-.097	.68	123	68

#3680315  
Tattoo: B70  
BD: 2-22-14  
Act. BW: 92  
Adj. WW: N/A

KCC Saginaw 6W

RDP Chocolate Chip X70

DCC New Look 101  
KCC 26J  
CNS Dream On L186  
RDP Karisma K51

An easy keeping, blaze faced cow that also goes back to my Karisma donor. She has always raised calves that really grow. I'm glad that I got some semen from the Metzger Cattle/Tommy Cline bull "Conan". He gave me some good heifers and bulls. She has a powerful red blaze bull calf at her side out of CDI Authority.

Consigned by Pischel Simmentals.

LOT  
100A

Red Polled Purebred Bull

BD: 2-2-20 Act BW: 96  
Sire: CDI Authority 77X  
Est. EPDs: 9 2.5 71 107 \* 3 23 58 16 \*  
Carcass: 30.4 -.42 -.02 -.09 .9 118 69

LOT  
101**RDP Karisma B8**

Black Polled 5/8 SM 3/8 AN Brockle Female

CE	BW	WW	YW	ADG	MCE	MM	MWW	STAY	DOC	CW	YG	MARB	BF	REA	API	TI
9	1.4	59	85	*	6	21	50	20	*	27.1	-.24	.15	-.045	.64	120	61

#3683018  
Tattoo: B8  
BD: 3-1-14  
Act. BW: 87  
Adj. WW: N/A

KCC Saginaw 6W

RDP Karisma K51

DCC New Look 101  
KCC 26J  
RDP 4x4 F4  
RDP Farrah F51

As a heifer B8 was showed at the county fair and was Supreme Champion. She has done a good job raising bulls and heifers. Great udder and teat structure. Her donor goes back to BOZ Red Coat and Bold Future.

Consigned by Pischel Simmentals.

LOT  
101A

Black Baldy Polled Purebred Female

BD: 2-12-20 Act BW: 87  
Sire: TJ Franchise 451D  
Est. EPDs: 13 .7 69 103 \* 9 20 55 20 \*  
Carcass: 32.6 -.17 .45 -.02 .66 146 76

LOT  
102**RDP Allison A7**

Black Polled Purebred Female

CE	BW	WW	YW	ADG	MCE	MM	MWW	STAY	DOC	CW	YG	MARB	BF	REA	API	TI
7	2.5	68	100	*	5	21	56	19	*	38.9	-.3	-.1	-.09	.64	115	64

#3683016  
Tattoo: A7  
BD: 3-19-13  
Act. BW: 82  
Adj. WW: N/A

SAS T101 Sweet Meat

RDP Snowflake S7

HTP SVF In Dew Time  
SAS Sweets Star R101  
TCF/RCC Temptation GJ640  
RDP Miss Coat E7

A deep bodied, good milking cow that goes back to BOZ Red Coat on the bottom side. My Sweet Meat daughters are very productive cows with good longevity. Her Franchise calf should be a money maker.

Consigned by Pischel Simmentals.

A.I. Sire: TJ Franchise 451D Date: 5-22-19 • Due: 3-1-20  
Est. Plan Mating EPDs: 12 1.25 74 111 \* 8 21 57 19 \*  
Carcass: 38.5 -.2 .32 -.05 .66 138 75



CDI Authority, Sire Reference



CCR Cowboy Cut, Sire Reference



TJ Franchise, Sire Reference





SVJ/NJC Built Right N48

LOT  
103

## Selling 2 Units Semen of SVJ/NJC Built Right

CE	BW	WW	YW	ADG	MCE	MM	MWW	STAY	DOC	CW	YG	MARB	BF	REA	API	TI
13	.9	60	82	.13	7	19	49	18	3.8	26.8	-.40	-.05	-.108	.63	122	63

#2225381  
Tattoo: N48  
BD: 11-4-03

CNS Dream On L186

NJC Ebony Antoinette

Nichols Legacy G151

CNS Sheeza Dream K107W

Black Irish Kansas

NJC Betsy Ross

Iconic and timeless National Champion baldy. One of the best female makers the breed has seen. Grab some flush quality semen while it is still available.



JF Back In Black 406B

LOT  
104

## Selling 2 Lots of 5 Units Semen of JF Back In Black

LOT  
104A

CE	BW	WW	YW	ADG	MCE	MM	MWW	STAY	DOC	CW	YG	MARB	BF	REA	API	TI
14	.4	53	76	.14	5	14	40	14	7.6	26.6	-.43	-.16	-.096	.82	107	57

#2887054  
Tattoo: 406B  
BD: 2-16-14

STF Royal Affair 244M

Zeis PCGF Perfection

Remington Lock N Load

STF Onyx 451W

SS Mr Callaway

Zeis Lookout x610

Everyone likes their Back In Blacks. Unfortunately, he was lost at an early age and only a minimal amount of semen remains. Get it while you can.

LOT  
105

## Selling 3 #1 or #2 Embryos by KA TCF Independence S30L

FBF1 Combustible

KA TCF Independence S30L

Est. Plan Mating EPDs: 10 2.95 62 99 .24 5 19 50 13 13.45  
Carcass: 29.85 -.46 -.25 -.10 .95 98 57

SVF Steel Force S701

Lazy H Burn Baby Burn R34

HC Power Drive 88H

Triple C Krissie L30Y

Mr NLC Upgrade U8676

KA TCF Independence S30L

Est. Plan Mating EPDs: 9 2.6 71 110 .25 4 24 59 12 10.85  
Carcass: 31.95 -.57 -.04 -.13 1.08 111 69

Ellingson Legacy M229

Ms NLC Mojo S6119 B

HC Power Drive 88H

Triple C Krissie L30Y

Silveiras Watchout 0514

KA TCF Independence S30L

Est. Plan Mating EPDs: 11 1.0 56 91 .22 6 24 52 13 11.05  
Carcass: 15.65 -.18 .19 -.03 .39 111 62

B C Lookout 7024

Silveiras Elba 6546

HC Power Drive 88H

Triple C Krissie L30Y

Indy was a great donor with 114 recorded calves in the ASA database and offspring across the US. Several high sellers to date. Selling one embryo of each mating. Get a son or daughter of one of the breed's premier power donors. Guaranteeing 1 pregnancy if work is performed by a certified embryologist.

LOT  
106

## Selling 3 #1 Embryos of CNS Perfection S603 x Irish Whiskey

Irish Whiskey

CNS Perfection S603 CNS Dream On L186  
SS Miss Break

There have been some pretty salty ones born from this mating. Take your opportunity to get a great Whiskey. Offered with Gulbrandson.



HC Power Drive 88H

LOT  
107

## Selling 1 Flush Quality Unit of HC Power Drive 88H

CE	BW	WW	YW	ADG	MCE	MM	MWW	STAY	DOC	CW	YG	MARB	BF	REA	API	TI
10	1.7	53	91	.24	4	28	55	20	12.4	18.4	-.45	-.15	-.095	.79	116	57

#1991647  
Tattoo: 88H  
BD: 3-5-88

WLE Power Stroke

Kappes Lady Irish F88

Burns Bull X339U

Nichols Joliette C75

Irish Black Knight

Kappes Lady Dakota D64

Selling one flush quality unit of one of the top Simmental sires of all time...HC Power Drive.



Gonsior The Beacon F80

LOT  
108

## Selling 3 #1 Embryos Full Sibs to Gonsior The Beacon F80

Hook's Beacon 56B

AS Diamond 20C

Hooks Shear Force 38K

Hooks Zafirah 41Z

W/C Wide Track 694Y

WRS Emerald Z216

A proven mating with top of the chart EPD's. Full sibs to the \$20,000 Gonsior The Beacon, now working at Volk Livestock. Imagine what you could do with a female from this mating!

Est. Plan Mating EPDs: 14 .20 77 115 .24 9 18 57 18 11.0  
Carcass: 39.5 -.50 .37 -.08 1.33 157 86





After 1st breeding season

**Black Polled Purebred Bull**  
 #3525125 Tattoo: F80  
 BD: 2-21-18  
 Act. BW: 82 Adj. WW: 733

**TOP 2% API & TI**  
**True calving ease**  
**purebred with**  
**smokin' eye appeal!**

Introducing  
**THE • BEACON**

**SEMEN**  
**\$35 PER UNIT**  
**10 UNIT MINIMUM**



Gonsior The Beacon  
F80



Hooks Beacon 56B  
Sire

CE	BW	WW	YW	ADG	MCE	MM	MWW	STAY	DOC	CW	YG	MARB	BF	REA	API	TI
14	.3	75	113	.24	9	22	59	18	11	40	-.50	.37	-.077	1.34	156	85

Hook's Beacon 56B    Hooks Shear Force 38K  
 AS Diamond 20C    Hooks Zafirah 41Z  
                               W/C Wide Track 694Y  
                               WRS Emerald Z216

**OWNERS:**  
**VOLK LIVESTOCK**  
**DEAN VOLK 402-992-9997 &**  
**GONSIOR SIMMENTALS**  
**SCOTT GONSIOR**  
**308-550-0739**

**Per Dave Zeis, Zeis Simmentals:** "Six calves born to date from heifers...have not touched one. Average BW at 64#. Vigor is excellent; they get up and chase the heifer down to nurse within minutes. Calf health excellent since birth; a heifer bull deluxe. Calves have great eye appeal, are square made and are growing like weeds. I will certainly use again."

**Per Dean Volk:** "The Beacon is one of the few purebred bulls out there with these kind of numbers that is true calving ease with this kind of eye appeal."

Proud  
 Supporter of:  
 AMERICAN SIMMENTAL-SIMBRAH



**TYLER  
 PROSOSKI**

**A GOOD  
 YOUNG MAN  
 THAT WILL BE  
 MISSED BY  
 MANY!**

In loving memory of Tyler Prososki  
 6/7/97 - 8/24/19

**First  
 Defense®**  
 SCOURS PREVENTATIVES  
 FOR CALF HEROES

**Targeted.  
 Effective.**

**GUARANTEED**

The only scours preventative  
 with *guaranteed* levels of  
 immediate immunity

**TRI-SHIELD®**  
 First Defense®  
 Rotavirus    Coronavirus    K99+E.coli

**DUAL-FORCE®**  
 First Defense®  
 Coronavirus    K99+E.coli

NASDAQ: ICCG

FirstDefenseCalfHealth.com

800.466.8235

Find us on

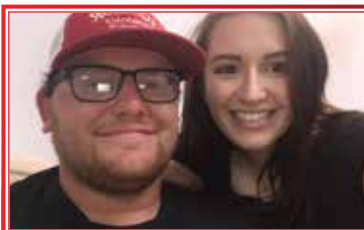


SEMEN FOR SALE

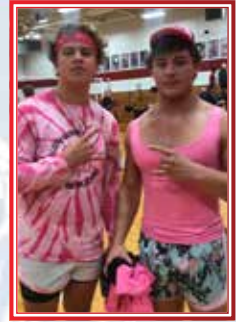
35

GONSIOR SIMMENTALS











**GONSIOR SIMMENTALS**

*Sunday, March 15th*

# IN•THE•HEARTLAND

**20TH ANNUAL PRODUCTION SALE**

**12:30 PM • Gonsior Farms Sale Facility**

**28906 State Hwy. 22 • Fullerton, Nebraska**



**Eberspacher Ent. Inc.**

2904 County Road 6  
Marshall, MN 56258

**First Class Mail: Time Dated Material!**

Presorted  
First Class  
US Postage  
**PAID**  
SlateGroup

Please bring this  
catalog and your  
ASA# to the sale  
with you.

**ONLINE  
BIDDING AT:**

**LiveAuctionsTV**

*Black & Red Polled SimGenetics  
Spring & Fall Herd Bull Prospects,  
Elite Bred Females & Cow/Calf Pairs,  
Open Heifers, Embryos & Semen!*